

Anti-APOOL antibody (219-268 aa) (STJ91647)

GENERAL INFORMATION

Product Type	Primary antibodies
Applications	WB/ELISA
Host / Source	Rabbit
Reactivity	Human/Mouse/Rat

PRODUCT PROPERTIES

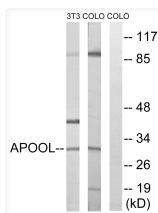
Clonality	Polyclonal
Concentration	1 mg/mL
Conjugation	Unconjugated
Purification	The antibody was affinity-purified from rabbit antiserum by affinity-chromatography using epitope-specific immunogen.
Dilution Range	WB 1:500-1:2000 ELISA 1:40000
Formulation	Liquid in PBS containing 50% Glycerol, 0.5% BSA and 0.02% Sodium Azide.
Isotype	IgG
Molecular Weight	Observed: 30kD
Storage Instruction	Store at -20°C for up to 1 year from the date of receipt, and avoid repeat freeze-thaw cycles.

TARGET INFORMATION

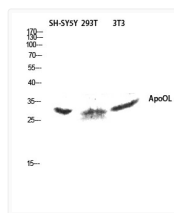
Gene ID	139322
Gene Symbol	APOOL
UniProt ID	MIC27_HUMAN
Immunogen Region	219-268 aa
Specificity	ApoOL Polyclonal Antibody detects endogenous levels of ApoOL protein.

ADDITIONAL INFORMATION

Note **STRICTLY FOR FURTHER SCIENTIFIC RESEARCH USE ONLY (RUO). MUST NOT TO BE USED IN DIAGNOSTIC OR THERAPEUTIC APPLICATIONS.**



Western blot analysis of lysates from COLO and NIH/3T3 cells, using APOOL Antibody. The lane on the right is blocked with the synthesized peptide.



Western blot analysis of SH-SY5Y 293T 3T3 lysis using ApoOL antibody. Antibody was diluted at 1:1000