

Anti-APOF antibody (221-270 aa) (STJ91641)

GENERAL INFORMATION

Product Type	Primary antibodies
Applications	WB/ELISA
Host / Source	Rabbit
Reactivity	Human/Rat/Mouse

PRODUCT PROPERTIES

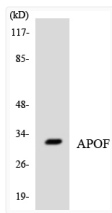
Clonality	Polyclonal
Concentration	1 mg/mL
Conjugation	Unconjugated
Purification	The antibody was affinity-purified from rabbit antiserum by affinity-chromatography using epitope-specific immunogen.
Dilution Range	WB 1:500-1:2000 ELISA 1:40000
Formulation	Liquid in PBS containing 50% Glycerol, 0.5% BSA and 0.02% Sodium Azide.
Isotype	IgG
Molecular Weight	Observed: 38kD
Storage Instruction	Store at -20°C for up to 1 year from the date of receipt, and avoid repeat freeze-thaw cycles.

TARGET INFORMATION

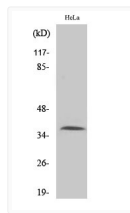
Gene ID	319
Gene Symbol	APOF
UniProt ID	APOF_HUMAN
Immunogen Region	221-270 aa
Specificity	ApoF Polyclonal Antibody detects endogenous levels of ApoF protein.

ADDITIONAL INFORMATION

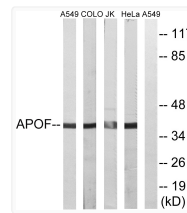
Note **STRICTLY FOR FURTHER SCIENTIFIC RESEARCH USE ONLY (RUO). MUST NOT TO BE USED IN DIAGNOSTIC OR THERAPEUTIC APPLICATIONS.**



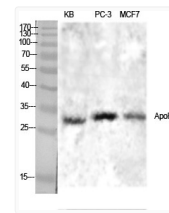
Western blot analysis of the lysates from COLO205 cells using APOF antibody.



Western blot analysis of A549 cells using ApoF Polyclonal Antibody diluted at 1: 1000



Western blot analysis of lysates from HeLa, Jurkat, COLO, and A549 cells, using APOF Antibody. The lane on the right is blocked with the synthesized peptide.



Western blot analysis of various cells using ApoF Polyclonal Antibody diluted at 1: 1000