

## Anti-APOBEC4 antibody (309-358 aa) (STJ91637)

### GENERAL INFORMATION

Product Type	Primary antibodies
Applications	WB/ELISA
Host / Source	Rabbit
Reactivity	Human/Rat/Mouse

### PRODUCT PROPERTIES

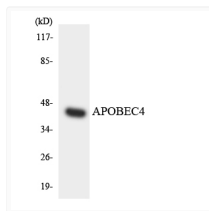
Clonality	Polyclonal
Concentration	1 mg/mL
Conjugation	Unconjugated
Purification	The antibody was affinity-purified from rabbit antiserum by affinity-chromatography using epitope-specific immunogen.
Dilution Range	WB 1:500-1:2000 ELISA 1:10000
Formulation	Liquid in PBS containing 50% Glycerol, 0.5% BSA and 0.02% Sodium Azide.
Isotype	IgG
Molecular Weight	Observed: 40kD
Storage Instruction	Store at -20°C for up to 1 year from the date of receipt, and avoid repeat freeze-thaw cycles.

### TARGET INFORMATION

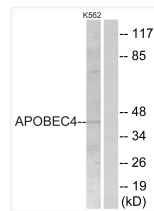
Gene ID	<a href="#">403314</a>
Gene Symbol	<a href="#">APOBEC4</a>
UniProt ID	<a href="#">ABEC4_HUMAN</a>
Immunogen Region	309-358 aa
Specificity	APOBEC4 Polyclonal Antibody detects endogenous levels of APOBEC4 protein.

### ADDITIONAL INFORMATION

Note **STRICTLY FOR FURTHER SCIENTIFIC RESEARCH USE ONLY (RUO). MUST NOT TO BE USED IN DIAGNOSTIC OR THERAPEUTIC APPLICATIONS.**



Western blot analysis of the lysates from HT-29 cells using APOBEC4 antibody.



Western blot analysis of lysates from K562 cells, using APOBEC4 Antibody. The lane on the right is blocked with the synthesized peptide.