

Anti-APOBEC3A antibody (27-76 aa) (STJ91635)

GENERAL INFORMATION

Product Type	Primary antibodies
Applications	WB/ELISA
Host / Source	Rabbit
Reactivity	Human/Rat/Mouse

PRODUCT PROPERTIES

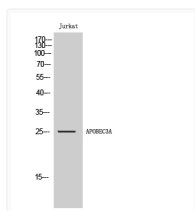
Clonality	Polyclonal
Concentration	1 mg/mL
Conjugation	Unconjugated
Purification	The antibody was affinity-purified from rabbit antiserum by affinity-chromatography using epitope-specific immunogen.
Dilution Range	WB 1:500-1:2000 ELISA 1:10000
Formulation	Liquid in PBS containing 50% Glycerol, 0.5% BSA and 0.02% Sodium Azide.
Isotype	IgG
Molecular Weight	Observed: 26kD
Storage Instruction	Store at -20°C for up to 1 year from the date of receipt, and avoid repeat freeze-thaw cycles.

TARGET INFORMATION

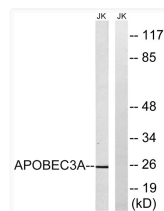
Gene ID	100913187/200315
Gene Symbol	APOBEC3A
UniProt ID	ABC3A_HUMAN
Immunogen Region	27-76 aa
Specificity	APOBEC3A Polyclonal Antibody detects endogenous levels of APOBEC3A protein.

ADDITIONAL INFORMATION

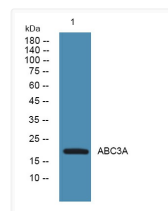
Note **STRICTLY FOR FURTHER SCIENTIFIC RESEARCH USE ONLY (RUO). MUST NOT TO BE USED IN DIAGNOSTIC OR THERAPEUTIC APPLICATIONS.**



Western Blot analysis of Jurkat cells using APOBEC3A Polyclonal Antibody STJ91635



Western blot analysis of lysates from Jurkat cells, using APOBEC3A Antibody. The lane on the right was blocked with the STJ91635



Western blot analysis of lysates from K562 cells, primary antibody was diluted at 1:1000, 4°C overnight STJ91635