

Anti-NECAB3 antibody (321-370 aa) (STJ91621)

GENERAL INFORMATION

Product Type	Primary antibodies
Applications	WB/IHC/IF/ELISA
Host / Source	Rabbit
Reactivity	Human/Mouse

PRODUCT PROPERTIES

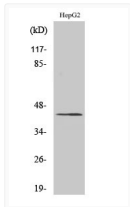
Clonality	Polyclonal
Concentration	1 mg/mL
Conjugation	Unconjugated
Purification	The antibody was affinity-purified from rabbit antiserum by affinity-chromatography using epitope-specific immunogen.
Dilution Range	WB 1:500-1:2000 IHC 1:100-1:300 IF 1:200-1:1000 ELISA 1:40000
Formulation	Liquid in PBS containing 50% Glycerol, 0.5% BSA and 0.02% Sodium Azide.
Isotype	IgG
Molecular Weight	Observed: 44kD
Storage Instruction	Store at -20°C for up to 1 year from the date of receipt, and avoid repeat freeze-thaw cycles.

TARGET INFORMATION

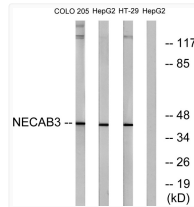
Gene ID	63941
Gene Symbol	NECAB3
UniProt ID	NECA3_HUMAN
Immunogen Region	321-370 aa
Specificity	APBA2BP Polyclonal Antibody detects endogenous levels of APBA2BP protein.

ADDITIONAL INFORMATION

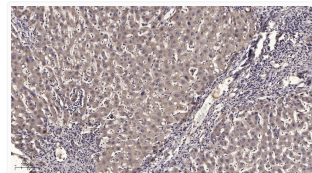
Note **STRICTLY FOR FURTHER SCIENTIFIC RESEARCH USE ONLY (RUO). MUST NOT TO BE USED IN DIAGNOSTIC OR THERAPEUTIC APPLICATIONS.**



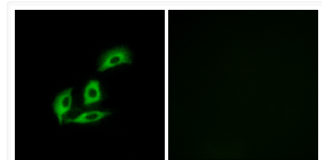
Western Blot analysis of various cells using APBA2BP Polyclonal Antibody STJ91621



Western blot analysis of lysates from HepG2, COLO, and HT-29 cells, using NECAB3 Antibody. The lane on the right is STJ91621



Immunohistochemical analysis of paraffin-embedded human liver cancer. 1, Antibody was diluted at 1:200 (4° overnight). STJ91621



Immunofluorescence analysis of A549 cells using NECAB3 Antibody. The picture on the right is blocked with the STJ91621