

Anti-APAF1 antibody (289-338 aa) (STJ91620)

GENERAL INFORMATION

| | |
|---------------|--------------------|
| Product Type | Primary antibodies |
| Applications | WB/IHC/IF/ELISA |
| Host / Source | Rabbit |
| Reactivity | Human/Rat/Mouse |

PRODUCT PROPERTIES

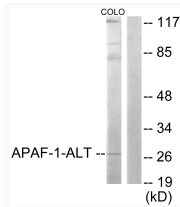
| | |
|---------------------|---|
| Clonality | Polyclonal |
| Concentration | 1 mg/mL |
| Conjugation | Unconjugated |
| Purification | The antibody was affinity-purified from rabbit antiserum by affinity-chromatography using epitope-specific immunogen. |
| Dilution Range | WB 1:500-1:2000 IHC 1:100-1:300 IF 1:200-1:1000 ELISA 1:10000 |
| Formulation | Liquid in PBS containing 50% Glycerol, 0.5% BSA and 0.02% Sodium Azide. |
| Isotype | IgG |
| Molecular Weight | Observed: 27kD |
| Storage Instruction | Store at -20°C for up to 1 year from the date of receipt, and avoid repeat freeze-thaw cycles. |

TARGET INFORMATION

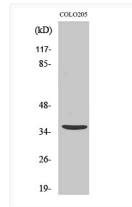
| | |
|------------------|---|
| Gene ID | 317 |
| Gene Symbol | APAF1 |
| UniProt ID | APAF_HUMAN |
| Immunogen Region | 289-338 aa |
| Specificity | Apaf-1-ALT Polyclonal Antibody detects endogenous levels of Apaf-1-ALT protein. |

ADDITIONAL INFORMATION

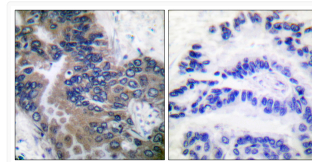
Note STRICTLY FOR FURTHER SCIENTIFIC RESEARCH USE ONLY (RUO). MUST NOT TO BE USED IN DIAGNOSTIC OR THERAPEUTIC APPLICATIONS.



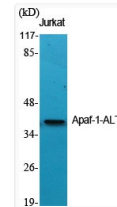
Western blot analysis of lysates from COLO205 cells, using APAF-1-ALT Antibody. The lane on the right is blocked with the synthesized peptide.



Western blot analysis of COLO205 cells using Apaf-1-ALT Polyclonal Antibody diluted at 1 : 500



Immunohistochemistry analysis of paraffin-embedded human lung carcinoma tissue, using APAF-1-ALT Antibody. The picture on the right is blocked with the synthesized peptide.



Western blot analysis of various cells using Apaf-1-ALT Polyclonal Antibody diluted at 1 : 500