

Anti-SLC25A31 antibody (131-180 aa) (STJ91607)

GENERAL INFORMATION

Product Type	Primary antibodies
Applications	WB/IHC/IF/ELISA
Host / Source	Rabbit
Reactivity	Human/Mouse

PRODUCT PROPERTIES

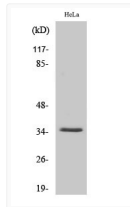
Clonality	Polyclonal
Concentration	1 mg/mL
Conjugation	Unconjugated
Purification	The antibody was affinity-purified from rabbit antiserum by affinity-chromatography using epitope-specific immunogen.
Dilution Range	WB 1:500-1:2000 IHC 1:100-1:300 IF 1:200-1:1000 ELISA 1:40000
Formulation	Liquid in PBS containing 50% Glycerol, 0.5% BSA and 0.02% Sodium Azide.
Isotype	IgG
Molecular Weight	Observed: 35kD
Storage Instruction	Store at -20°C for up to 1 year from the date of receipt, and avoid repeat freeze-thaw cycles.

TARGET INFORMATION

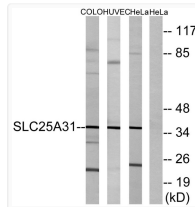
Gene ID	83447
Gene Symbol	SLC25A31
UniProt ID	ADT4_HUMAN
Immunogen Region	131-180 aa
Specificity	ANT4 Polyclonal Antibody detects endogenous levels of ANT4 protein.

ADDITIONAL INFORMATION

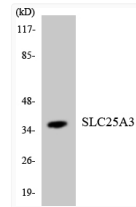
Note STRICTLY FOR FURTHER SCIENTIFIC RESEARCH USE ONLY (RUO). MUST NOT TO BE USED IN DIAGNOSTIC OR THERAPEUTIC APPLICATIONS.



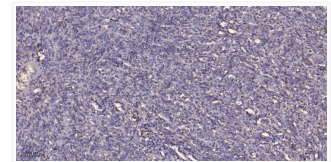
Western blot analysis of various cells using ANT4 Polyclonal Antibody diluted at 1:500 STJ91607



Western blot analysis of lysates from HeLa, HUVEC, and COLO cells, using SLC25A31 Antibody. The lane on the right was STJ91607



Western blot analysis of the lysates from K562 cells using SLC25A31 antibody. STJ91607



Immunohistochemical analysis of paraffin-embedded human colon cancer. 1, Antibody was diluted at 1:200 (4° overnight). STJ91607