

Anti-ANXA1 antibody (15-64 aa) (STJ91600)

GENERAL INFORMATION

Product Type	Primary antibodies
Applications	WB/ELISA
Host / Source	Rabbit
Reactivity	Human/Rat/Mouse

PRODUCT PROPERTIES

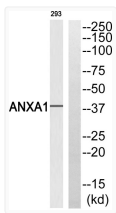
Clonality	Polyclonal
Concentration	1 mg/mL
Conjugation	Unconjugated
Purification	The antibody was affinity-purified from rabbit antiserum by affinity-chromatography using epitope-specific immunogen.
Dilution Range	WB 1:500-1:2000 ELISA 1:10000
Formulation	Liquid in PBS containing 50% Glycerol, 0.5% BSA and 0.02% Sodium Azide.
Isotype	IgG
Molecular Weight	Observed: 38kD
Storage Instruction	Store at -20°C for up to 1 year from the date of receipt, and avoid repeat freeze-thaw cycles.

TARGET INFORMATION

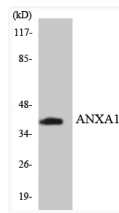
Gene ID	301
Gene Symbol	ANXA1
UniProt ID	ANXA1_HUMAN
Immunogen Region	15-64 aa
Specificity	Annexin I Polyclonal Antibody detects endogenous levels of Annexin I protein.

ADDITIONAL INFORMATION

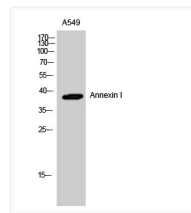
Note **STRICTLY FOR FURTHER SCIENTIFIC RESEARCH USE ONLY (RUO). MUST NOT TO BE USED IN DIAGNOSTIC OR THERAPEUTIC APPLICATIONS.**



Western blot analysis of ANXA1 Antibody. The lane on the right is blocked with the ANXA1 peptide.



Western blot analysis of the lysates from HepG2 cells using ANXA1 antibody.



Western blot analysis of A549 cells using Annexin I Polyclonal Antibody diluted at 1: 2000