

Anti-ANGPTL7 antibody (297-346 aa) (STJ91594)

GENERAL INFORMATION

Product Type	Primary antibodies
Applications	WB/IHC/IF/ELISA
Host / Source	Rabbit
Reactivity	Human/Mouse

PRODUCT PROPERTIES

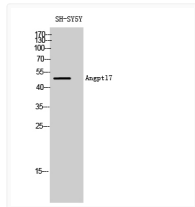
Clonality	Polyclonal
Concentration	1 mg/mL
Conjugation	Unconjugated
Purification	The antibody was affinity-purified from rabbit antiserum by affinity-chromatography using epitope-specific immunogen.
Dilution Range	WB 1:500-1:2000 IHC 1:100-1:300 ELISA 1:10000 IF 1:50-200
Formulation	Liquid in PBS containing 50% Glycerol, 0.5% BSA and 0.02% Sodium Azide.
Isotype	IgG
Molecular Weight	Observed: 50kD
Storage Instruction	Store at -20°C for up to 1 year from the date of receipt, and avoid repeat freeze-thaw cycles.

TARGET INFORMATION

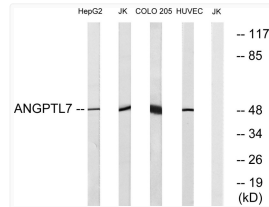
Gene ID	10218
Gene Symbol	ANGPTL7
UniProt ID	ANGL7_HUMAN
Immunogen Region	297-346 aa
Specificity	Angptl7 Polyclonal Antibody detects endogenous levels of Angptl7 protein.

ADDITIONAL INFORMATION

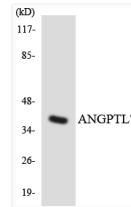
Note **STRICTLY FOR FURTHER SCIENTIFIC RESEARCH USE ONLY (RUO). MUST NOT TO BE USED IN DIAGNOSTIC OR THERAPEUTIC APPLICATIONS.**



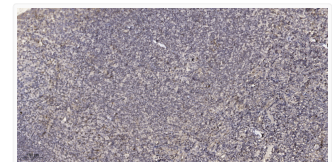
Western blot analysis of SH-SY5Y cells using Angptl7 polyclonal antibody diluted at 1:2000 STJ91594



Western blot analysis of lysates from Jurkat, COLO, HUVEC, and HepG2 cells, using ANGPTL7 Antibody. The lane on the STJ91594



Western blot analysis of the lysates from HeLa cells using ANGPTL7 antibody. STJ91594



Immunohistochemical analysis of paraffin-embedded human tonsil. 1, Antibody was diluted at 1:200 (4° overnight). 2, STJ91594