

Anti-ALX3 antibody (171-220 aa) (STJ91572)

GENERAL INFORMATION

Product Type	Primary antibodies
Applications	WB/IHC/IF/ELISA
Host / Source	Rabbit
Reactivity	Human/Mouse/Rat

PRODUCT PROPERTIES

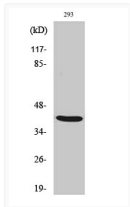
Clonality	Polyclonal
Concentration	1 mg/mL
Conjugation	Unconjugated
Purification	The antibody was affinity-purified from rabbit antiserum by affinity-chromatography using epitope-specific immunogen.
Dilution Range	WB 1:500-1:2000 IHC 1:100-1:300 IF 1:200-1:1000 ELISA 1:20000
Formulation	Liquid in PBS containing 50% Glycerol, 0.5% BSA and 0.02% Sodium Azide.
Isotype	IgG
Molecular Weight	Observed: 36kD
Storage Instruction	Store at -20°C for up to 1 year from the date of receipt, and avoid repeat freeze-thaw cycles.

TARGET INFORMATION

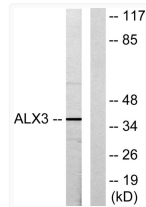
Gene ID	257
Gene Symbol	ALX3
UniProt ID	ALX3_HUMAN
Immunogen Region	171-220 aa
Specificity	ALX3 Polyclonal Antibody detects endogenous levels of ALX3 protein.

ADDITIONAL INFORMATION

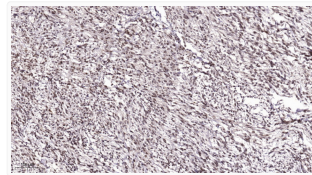
Note: STRICTLY FOR FURTHER SCIENTIFIC RESEARCH USE ONLY (RUO). MUST NOT TO BE USED IN DIAGNOSTIC OR THERAPEUTIC APPLICATIONS.



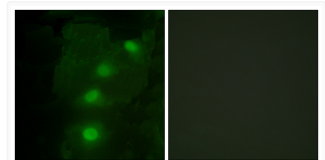
Western Blot analysis of various cells using ALX3 Polyclonal Antibody on cells' nuclei extracted by Minute™ Cytoplasmic STJ91572



Western blot analysis of lysates from 293 cells, using ALX3 Antibody. The lane on the right is blocked with the STJ91572



Immunohistochemical analysis of paraffin-embedded human colon cancer. 1, Antibody was diluted at 1:200 (4° overnight). STJ91572



Immunofluorescence analysis of HeLa cells using ALX3 Antibody. The picture on the right is blocked with the synthesized STJ91572