

Anti-AKR1E2 antibody (141-190 aa) (STJ91536)

GENERAL INFORMATION

Product Type	Primary antibodies
Applications	WB/IHC/IF/ELISA
Host / Source	Rabbit
Reactivity	Human/Rat/Mouse

PRODUCT PROPERTIES

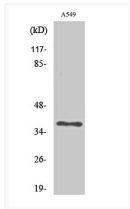
Clonality	Polyclonal
Concentration	1 mg/mL
Conjugation	Unconjugated
Purification	The antibody was affinity-purified from rabbit antiserum by affinity-chromatography using epitope-specific immunogen.
Dilution Range	WB 1:500-1:2000 IHC 1:100-1:300 ELISA 1:10000 IF 1:50-200
Formulation	Liquid in PBS containing 50% Glycerol, 0.5% BSA and 0.02% Sodium Azide.
Isotype	IgG
Molecular Weight	Observed: 37kD
Storage Instruction	Store at -20°C for up to 1 year from the date of receipt, and avoid repeat freeze-thaw cycles.

TARGET INFORMATION

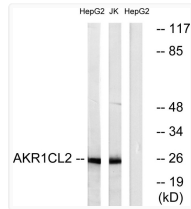
Gene ID	83592
Gene Symbol	AKR1E2
UniProt ID	AKCL2_HUMAN
Immunogen Region	141-190 aa
Specificity	AKR1CL2 Polyclonal Antibody detects endogenous levels of AKR1CL2 protein.

ADDITIONAL INFORMATION

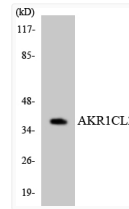
Note STRICTLY FOR FURTHER SCIENTIFIC RESEARCH USE ONLY (RUO). MUST NOT TO BE USED IN DIAGNOSTIC OR THERAPEUTIC APPLICATIONS.



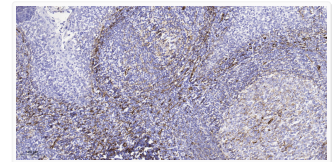
Western Blot analysis of various cells using AKR1CL2 Polyclonal Antibody diluted at 1:500 STJ91536



Western blot analysis of lysates from HepG2 and Jurkat cells, using AKR1CL2 Antibody. The lane on the right was blocked STJ91536



Western blot analysis of the lysates from HT-29 cells using AKR1CL2 antibody. STJ91536



Immunohistochemical analysis of paraffin-embedded human tonsil. 1, Tris-EDTA, pH 9.0 was used for antigen retrieval. 2, STJ91536