

## Anti-ADD3 antibody (431-480 aa) (STJ91492)

### GENERAL INFORMATION

Product Type	Primary antibodies
Applications	WB/IHC/IF/ELISA
Host / Source	Rabbit
Reactivity	Human/Mouse/Rat

### PRODUCT PROPERTIES

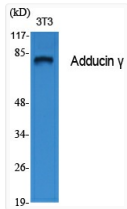
Clonality	Polyclonal
Concentration	1 mg/mL
Conjugation	Unconjugated
Purification	The antibody was affinity-purified from rabbit antiserum by affinity-chromatography using epitope-specific immunogen.
Dilution Range	WB 1:500-1:2000 IHC 1:100-1:300 IF 1:200-1:1000 ELISA 1:10000
Formulation	Liquid in PBS containing 50% Glycerol, 0.5% BSA and 0.02% Sodium Azide.
Isotype	IgG
Molecular Weight	Observed: 75kD
Storage Instruction	Store at -20°C for up to 1 year from the date of receipt, and avoid repeat freeze-thaw cycles.

### TARGET INFORMATION

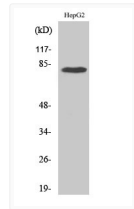
Gene ID	<a href="#">120</a>
Gene Symbol	<a href="#">ADD3</a>
UniProt ID	<a href="#">ADDG_HUMAN</a>
Immunogen Region	431-480 aa
Specificity	Adducin Gamma Polyclonal Antibody detects endogenous levels of Adducin Gamma protein.

### ADDITIONAL INFORMATION

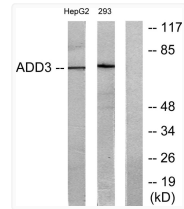
Note **STRICTLY FOR FURTHER SCIENTIFIC RESEARCH USE ONLY (RUO). MUST NOT TO BE USED IN DIAGNOSTIC OR THERAPEUTIC APPLICATIONS.**



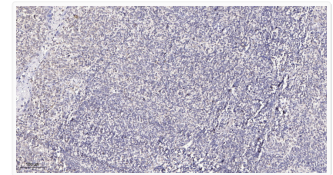
Western blot analysis of various cells using Adducin γ Polyclonal Antibody STJ91492



Western blot analysis of 293 cells using Adducin γ polyclonal antibody STJ91492



Western blot analysis of lysates from HepG2 and 293 cells, using ADD3 Antibody. The lane on the right was blocked with STJ91492



Immunohistochemical analysis of paraffin-embedded human tonsil. 1, Antibody was diluted at 1:200 (4° overnight). 2, STJ91492