

## Anti-Adducin antibody (688-737 aa) (STJ91490)

### GENERAL INFORMATION

Product Type	Primary antibodies
Applications	WB/IHC/IP/IF/ELISA
Host / Source	Rabbit
Reactivity	Human/Mouse/Rat

### PRODUCT PROPERTIES

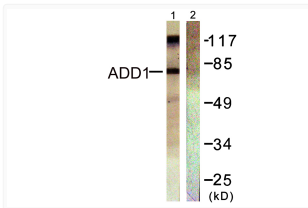
Clonality	Polyclonal
Concentration	1 mg/mL
Conjugation	Unconjugated
Purification	The antibody was affinity-purified from rabbit antiserum by affinity-chromatography using epitope-specific immunogen.
Dilution Range	WB 1:500-1:2000 IHC 1:100-1:300 IP 2-5 ug mg/lysate IF 1:200-1:1000 ELISA 1:40000
Formulation	Liquid in PBS containing 50% Glycerol, 0.5% BSA and 0.02% Sodium Azide.
Isotype	IgG
Molecular Weight	Observed: 80kD
Storage Instruction	Store at -20°C for up to 1 year from the date of receipt, and avoid repeat freeze-thaw cycles.

### TARGET INFORMATION

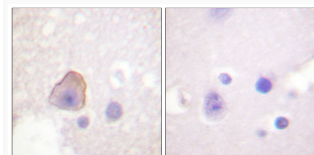
Gene ID	<a href="#">119</a> <a href="#">118</a>
Gene Symbol	<a href="#">ADD2</a> <a href="#">ADD1</a>
UniProt ID	<a href="#">ADDB_HUMAN</a> <a href="#">ADDA_HUMAN</a>
Immunogen Region	688-737 aa
Specificity	Adducin Alpha/Beta Polyclonal Antibody detects endogenous levels of Adducin Alpha/Beta protein.

### ADDITIONAL INFORMATION

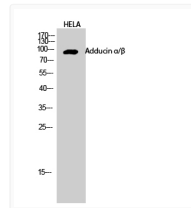
Note STRICTLY FOR FURTHER SCIENTIFIC RESEARCH USE ONLY (RUO). MUST NOT TO BE USED IN DIAGNOSTIC OR THERAPEUTIC APPLICATIONS.



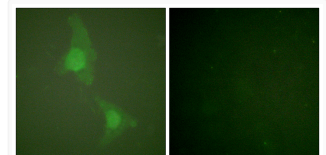
Western blot analysis of lysates from HeLa cells, treated with Forskolin 40nM 30', using ADD1 Antibody. The lane on the right is blocked with the synthesized peptide.



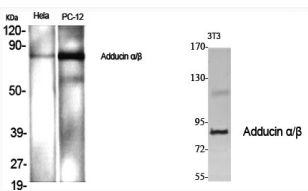
Immunohistochemistry analysis of paraffin-embedded human brain tissue, using ADD1 Antibody. The picture on the right is blocked with the synthesized peptide.



Western blot analysis of HELA cells using Adducin Alpha/Beta Polyclonal Antibody diluted at 1: 1000



Immunofluorescence analysis of HeLa cells, using ADD1 Antibody. The picture on the right is blocked with the synthesized peptide.



Western blot analysis of various cells using Adducin Alpha/Beta Polyclonal Antibody diluted at 1: 1000