

Anti-ACTN1 antibody (1-80 aa) (STJ91465)

GENERAL INFORMATION

Product Type	Primary antibodies
Applications	WB/ELISA
Host / Source	Rabbit
Reactivity	Human/Mouse/Rat

PRODUCT PROPERTIES

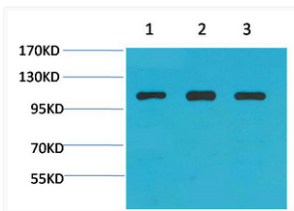
Clonality	Polyclonal
Concentration	1 mg/mL
Conjugation	Unconjugated
Purification	The antibody was affinity-purified from rabbit antiserum by affinity-chromatography using epitope-specific immunogen.
Dilution Range	WB 1:500-1:2000 ELISA 1:40000
Formulation	Liquid in PBS containing 50% Glycerol, 0.5% BSA and 0.02% Sodium Azide.
Isotype	IgG
Molecular Weight	Observed: 103kD
Storage Instruction	Store at -20°C for up to 1 year from the date of receipt, and avoid repeat freeze-thaw cycles.

TARGET INFORMATION

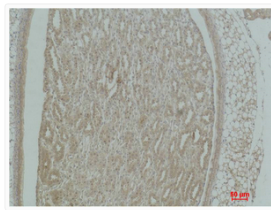
Gene ID	87
Gene Symbol	ACTN1
UniProt ID	ACTN1_HUMAN
Immunogen Region	1-80 aa
Specificity	Actinin-Alpha 1 Polyclonal Antibody detects endogenous levels of Actinin-Alpha 1 protein.

ADDITIONAL INFORMATION

Note **STRICTLY FOR FURTHER SCIENTIFIC RESEARCH USE ONLY (RUO). MUST NOT TO BE USED IN DIAGNOSTIC OR THERAPEUTIC APPLICATIONS.**



Western blot analysis of 1) 3T3, 2) PC12, 3) Rat Heart Tissue using Actinin- α 1 Polyclonal Antibody. Secondary antibody (STJ99666) was diluted at 1:20000



Immunohistochemical analysis of paraffin-embedded mouse Kidney Tissue using Actinin- α 1 Polyclonal Antibody.