

Anti-ACTG2 antibody (1-50 aa) (STJ91463)

GENERAL INFORMATION

| | |
|---------------|--------------------|
| Product Type | Primary antibodies |
| Applications | WB/IHC/IF/ELISA |
| Host / Source | Rabbit |
| Reactivity | Human/Mouse/Rat |

PRODUCT PROPERTIES

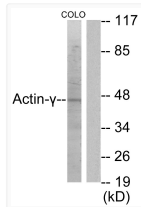
| | |
|---------------------|---|
| Clonality | Polyclonal |
| Concentration | 1 mg/mL |
| Conjugation | Unconjugated |
| Purification | The antibody was affinity-purified from rabbit antiserum by affinity-chromatography using epitope-specific immunogen. |
| Dilution Range | WB 1:500-1:2000 IHC 1:100-1:300 IF 1:200-1:1000 ELISA 1:20000 |
| Formulation | Liquid in PBS containing 50% Glycerol, 0.5% BSA and 0.02% Sodium Azide. |
| Isotype | IgG |
| Molecular Weight | Observed: 45kD |
| Storage Instruction | Store at -20°C for up to 1 year from the date of receipt, and avoid repeat freeze-thaw cycles. |

TARGET INFORMATION

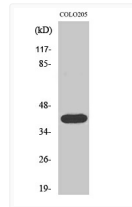
| | |
|------------------|---|
| Gene ID | 72 |
| Gene Symbol | ACTG2 |
| UniProt ID | ACTH_HUMAN |
| Immunogen Region | 1-50 aa |
| Specificity | Actin Alpha 3 Polyclonal Antibody detects endogenous levels of Actin Alpha 3 protein. |

ADDITIONAL INFORMATION

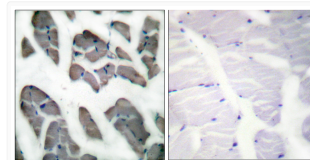
Note STRICTLY FOR FURTHER SCIENTIFIC RESEARCH USE ONLY (RUO). MUST NOT TO BE USED IN DIAGNOSTIC OR THERAPEUTIC APPLICATIONS.



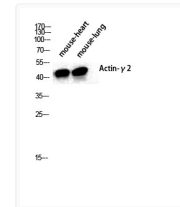
Western blot analysis of lysates from COLO205 cells, using Actin-gamma2 Antibody. The lane on the right is blocked with the synthesized peptide.



Western blot analysis of COLO205 cells using Actin Alpha 3 Polyclonal Antibody diluted at 1:2000



Immunohistochemistry analysis of paraffin-embedded human skeletal muscle tissue, using Actin-gamma2 Antibody. The picture on the right is blocked with the synthesized peptide.



Western blot analysis of various cells using Actin Alpha 3 Polyclonal Antibody diluted at 1:2000