

Anti-ACSS1 antibody (611-660 aa) (STJ91458)

GENERAL INFORMATION

Product Type	Primary antibodies
Applications	WB/IHC/IF/ELISA
Host / Source	Rabbit
Reactivity	Human/Mouse

PRODUCT PROPERTIES

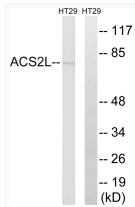
Clonality	Polyclonal
Concentration	1 mg/mL
Conjugation	Unconjugated
Purification	The antibody was affinity-purified from rabbit antiserum by affinity-chromatography using epitope-specific immunogen.
Dilution Range	WB 1:500-1:2000 IHC 1:100-1:300 ELISA 1:40000 IF 1:50-200
Formulation	Liquid in PBS containing 50% Glycerol, 0.5% BSA and 0.02% Sodium Azide.
Isotype	IgG
Molecular Weight	Observed: 75kD
Storage Instruction	Store at -20°C for up to 1 year from the date of receipt, and avoid repeat freeze-thaw cycles.

TARGET INFORMATION

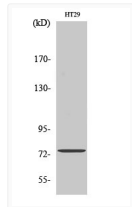
Gene ID	84532
Gene Symbol	ACSS1
UniProt ID	ACS2L_HUMAN
Immunogen Region	611-660 aa
Specificity	ACSS1 Polyclonal Antibody detects endogenous levels of ACSS1 protein.

ADDITIONAL INFORMATION

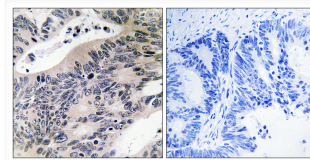
Note STRICTLY FOR FURTHER SCIENTIFIC RESEARCH USE ONLY (RUO). MUST NOT TO BE USED IN DIAGNOSTIC OR THERAPEUTIC APPLICATIONS.



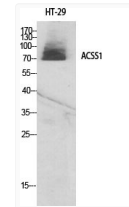
Western blot analysis of lysates from HT-29 cells, using ACSS1 Antibody. The lane on the right is blocked with the synthesized peptide.



Western blot analysis of HT29 cells using ACSS1 Polyclonal Antibody



Immunohistochemistry analysis of paraffin-embedded human colon carcinoma tissue, using ACSS1 Antibody. The picture on the right is blocked with the synthesized peptide.



Western blot analysis of various cells using ACSS1 Polyclonal Antibody