

## Anti-AASS antibody (251-300 aa) (STJ91406)

### GENERAL INFORMATION

|               |                    |
|---------------|--------------------|
| Product Type  | Primary antibodies |
| Applications  | WB/ELISA           |
| Host / Source | Rabbit             |
| Reactivity    | Human/Rat/Mouse    |

### PRODUCT PROPERTIES

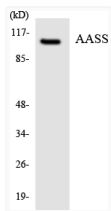
|                     |   |
|---------------------|---|
| Clonality           | Polyclonal  |
| Concentration       | 1 mg/mL   |
| Conjugation         | Unconjugated  |
| Purification        | The antibody was affinity-purified from rabbit antiserum by affinity-chromatography using epitope-specific immunogen. |
| Dilution Range      | WB 1:500-1:2000<br>ELISA 1:10000  |
| Formulation         | Liquid in PBS containing 50% Glycerol, 0.5% BSA and 0.02% Sodium Azide.   |
| Isotype             | IgG   |
| Molecular Weight    | Observed: 102kD   |
| Storage Instruction | Store at -20°C for up to 1 year from the date of receipt, and avoid repeat freeze-thaw cycles.                        |

### TARGET INFORMATION

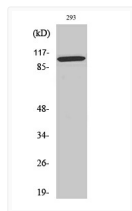
|                  |   |
|------------------|---|
| Gene ID          | <a href="#">10157</a>   |
| Gene Symbol      | <a href="#">AASS</a>  |
| UniProt ID       | <a href="#">AASS_HUMAN</a>  |
| Immunogen Region | 251-300 aa  |
| Specificity      | AASS Polyclonal Antibody detects endogenous levels of AASS protein. |

### ADDITIONAL INFORMATION

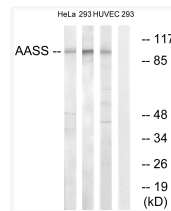
Note **STRICTLY FOR FURTHER SCIENTIFIC RESEARCH USE ONLY (RUO). MUST NOT TO BE USED IN DIAGNOSTIC OR THERAPEUTIC APPLICATIONS.**



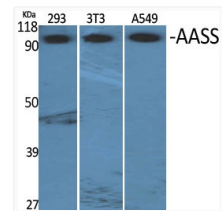
Western blot analysis of the lysates from COLO205 cells using AASS antibody.



Western blot analysis of HeLa cells using AASS Polyclonal Antibody



Western blot analysis of lysates from 293, HUVEC, and HeLa cells, using AASS Antibody. The lane on the right is blocked with the synthesized peptide.



Western blot analysis of various cells using AASS Polyclonal Antibody