

Anti-AARSD1 antibody (141-190 aa) (STJ91404)

GENERAL INFORMATION

Product Type	Primary antibodies
Applications	WB/ELISA
Host / Source	Rabbit
Reactivity	Human/Mouse/Rat

PRODUCT PROPERTIES

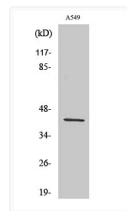
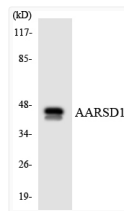
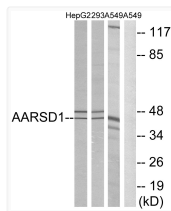
Clonality	Polyclonal
Concentration	1 mg/mL
Conjugation	Unconjugated
Purification	The antibody was affinity-purified from rabbit antiserum by affinity-chromatography using epitope-specific immunogen.
Dilution Range	WB 1:500-1:2000 ELISA 1:40000
Formulation	Liquid in PBS containing 50% Glycerol, 0.5% BSA and 0.02% Sodium Azide.
Isotype	IgG
Molecular Weight	Observed: 45kD
Storage Instruction	Store at -20°C for up to 1 year from the date of receipt, and avoid repeat freeze-thaw cycles.

TARGET INFORMATION

Gene ID	80755
Gene Symbol	AARSD1
UniProt ID	AASD1_HUMAN
Immunogen Region	141-190 aa
Specificity	AARSD1 Polyclonal Antibody detects endogenous levels of AARSD1 protein.

ADDITIONAL INFORMATION

Note **STRICTLY FOR FURTHER SCIENTIFIC RESEARCH USE ONLY (RUO). MUST NOT TO BE USED IN DIAGNOSTIC OR THERAPEUTIC APPLICATIONS.**



Western blot analysis of lysates from A549, 293, and HepG2 cells, using AARSD1 Antibody. The lane on the right is blocked with the synthesized peptide.

Western blot analysis of the lysates from HUVECells using AARSD1 antibody.

Western blot analysis of various cells using AARSD1 Polyclonal Antibody.