

## Anti-A Cyclase V/VI antibody (931-980 aa) (STJ91398)

### GENERAL INFORMATION

Product Type	Primary antibodies
Applications	IHC/IF/ELISA
Host / Source	Rabbit
Reactivity	Human/Mouse/Rat

### PRODUCT PROPERTIES

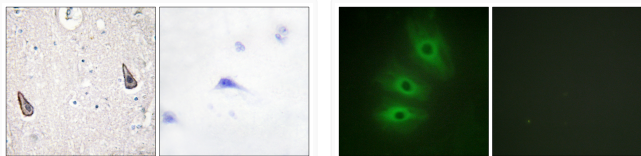
Clonality	Polyclonal
Concentration	1 mg/mL
Conjugation	Unconjugated
Purification	The antibody was affinity-purified from rabbit antiserum by affinity-chromatography using epitope-specific immunogen.
Dilution Range	IHC 1:100-1:300 IF 1:200-1:1000 ELISA 1:20000
Formulation	Liquid in PBS containing 50% Glycerol, 0.5% BSA and 0.02% Sodium Azide.
Isotype	IgG
Molecular Weight	Calculated: 131kD
Storage Instruction	Store at -20°C for up to 1 year from the date of receipt, and avoid repeat freeze-thaw cycles.

### TARGET INFORMATION

Gene ID	<a href="#">111</a> <a href="#">112</a>
Gene Symbol	<a href="#">ADCY5</a> <a href="#">ADCY6</a>
UniProt ID	<a href="#">ADCY5_HUMAN</a> <a href="#">ADCY6_HUMAN</a>
Immunogen Region	931-980 aa
Specificity	A Cyclase V/VI Polyclonal Antibody detects endogenous levels of A Cyclase V/VI protein.

### ADDITIONAL INFORMATION

Note STRICTLY FOR FURTHER SCIENTIFIC RESEARCH USE ONLY (RUO). MUST NOT TO BE USED IN DIAGNOSTIC OR THERAPEUTIC APPLICATIONS.



Immunohistochemistry analysis of paraffin-embedded human brain tissue, using ADCY5/6 Antibody. The picture on the right is blocked with the synthesized peptide.

Immunofluorescence analysis of HeLa cells, using ADCY5/6 Antibody. The picture on the right is blocked with the synthesized peptide.