

## Anti-ADCY9 antibody (137-186 aa) (STJ91396)

### GENERAL INFORMATION

Product Type	Primary antibodies
Applications	WB/IHC/IF/ELISA
Host / Source	Rabbit
Reactivity	Human/Rat/Mouse

### PRODUCT PROPERTIES

Clonality	Polyclonal
Concentration	1 mg/mL
Conjugation	Unconjugated
Purification	The antibody was affinity-purified from rabbit antiserum by affinity-chromatography using epitope-specific immunogen.
Dilution Range	WB 1:500-1:2000 IHC 1:100-1:300 ELISA 1:10000 IF 1:50-200
Formulation	Liquid in PBS containing 50% Glycerol, 0.5% BSA and 0.02% Sodium Azide.
Isotype	IgG
Molecular Weight	Observed: 150kD
Storage Instruction	Store at -20°C for up to 1 year from the date of receipt, and avoid repeat freeze-thaw cycles.

### TARGET INFORMATION

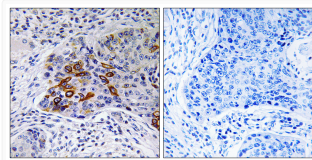
Gene ID	<a href="#">115</a>
Gene Symbol	<a href="#">ADCY9</a>
UniProt ID	<a href="#">ADCY9_HUMAN</a>
Immunogen Region	137-186 aa
Specificity	A Cyclase IX Polyclonal Antibody detects endogenous levels of A Cyclase IX protein.

### ADDITIONAL INFORMATION

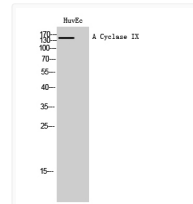
Note STRICTLY FOR FURTHER SCIENTIFIC RESEARCH USE ONLY (RUO). MUST NOT TO BE USED IN DIAGNOSTIC OR THERAPEUTIC APPLICATIONS.



Western blot analysis of ADCY9 Antibody. The lane on the right is blocked with the ADCY9 peptide.



Immunohistochemistry analysis of paraffin-embedded human lung carcinoma, using ADCY9 Antibody. The lane on the right is blocked with the ADCY9 peptide.



Western blot analysis of HuvEc cells using A Cyclase IX Polyclonal Antibody diluted at 1: 1000