

Anti-SRSF7 antibody (61-110 aa) (STJ91393)

GENERAL INFORMATION

Product Type	Primary antibodies
Applications	WB/IHC/IF/ELISA
Host / Source	Rabbit
Reactivity	Human/Mouse

PRODUCT PROPERTIES

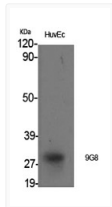
Clonality	Polyclonal
Concentration	1 mg/mL
Conjugation	Unconjugated
Purification	The antibody was affinity-purified from rabbit antiserum by affinity-chromatography using epitope-specific immunogen.
Dilution Range	WB 1:500-1:2000 IHC 1:100-1:300 ELISA 1:40000 IF 1:50-200
Formulation	Liquid in PBS containing 50% Glycerol, 0.5% BSA and 0.02% Sodium Azide.
Isotype	IgG
Molecular Weight	Observed: 35kD
Storage Instruction	Store at -20°C for up to 1 year from the date of receipt, and avoid repeat freeze-thaw cycles.

TARGET INFORMATION

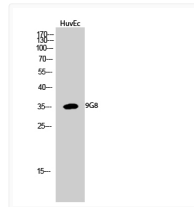
Gene ID	6432
Gene Symbol	SRSF7
UniProt ID	SRSF7_HUMAN
Immunogen Region	61-110 aa
Specificity	9G8 Polyclonal Antibody detects endogenous levels of 9G8 protein.

ADDITIONAL INFORMATION

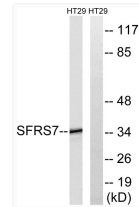
Note STRICTLY FOR FURTHER SCIENTIFIC RESEARCH USE ONLY (RUO). MUST NOT TO BE USED IN DIAGNOSTIC OR THERAPEUTIC APPLICATIONS.



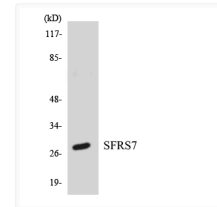
Western blot analysis of various cells using 9G8 polyclonal antibody. Cells nucleus extracted by Minute™ Cytoplasmic STJ91393



Western blot analysis of HUVECs using 9G8 polyclonal antibody on cells with nuclei extracted by Minute™ Cytoplasmic and STJ91393



Western blot analysis of lysates from HT-29 cells, using SFRS7 Antibody. The lane on the right is blocked with the STJ91393



Western blot analysis of the lysates from HT-29 cells using SFRS7 antibody. STJ91393



Immunohistochemical analysis of paraffin-embedded human tonsil. 1, Tris-EDTA, pH 9.0 was used for antigen retrieval. 2, STJ91393