

## Anti-14-3-3 Beta/Zeta antibody (151-200 aa) (STJ91368)

### GENERAL INFORMATION

Product Type	Primary antibodies
Applications	WB/IHC/IF/ELISA
Host / Source	Rabbit
Reactivity	Human/Mouse/Rat

### PRODUCT PROPERTIES

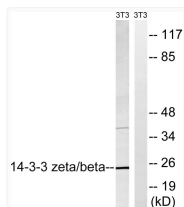
Clonality	Polyclonal
Concentration	1 mg/mL
Conjugation	Unconjugated
Purification	The antibody was affinity-purified from rabbit antiserum by affinity-chromatography using epitope-specific immunogen.
Dilution Range	WB 1:500-1:2000 ELISA 1:20000 IF 1:50-200
Formulation	Liquid in PBS containing 50% Glycerol, 0.5% BSA and 0.02% Sodium Azide.
Isotype	IgG
Molecular Weight	Observed: 24kD
Storage Instruction	Store at -20°C for up to 1 year from the date of receipt, and avoid repeat freeze-thaw cycles.

### TARGET INFORMATION

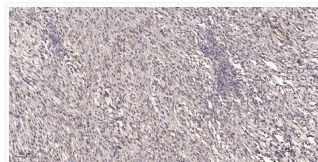
Gene ID	<a href="#">7529</a> <a href="#">7534</a>
Gene Symbol	<a href="#">YWHAB</a> <a href="#">YWHAZ</a>
UniProt ID	<a href="#">1433B_HUMAN</a> <a href="#">1433Z_HUMAN</a>
Immunogen Region	151-200 aa
Specificity	14-3-3 Beta/Zeta Polyclonal Antibody detects endogenous levels of 14-3-3 Beta/Zeta protein.

### ADDITIONAL INFORMATION

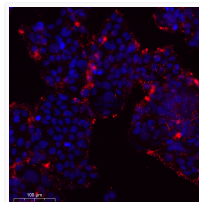
Note STRICTLY FOR FURTHER SCIENTIFIC RESEARCH USE ONLY (RUO). MUST NOT TO BE USED IN DIAGNOSTIC OR THERAPEUTIC APPLICATIONS.



Western blot analysis of lysates from NIH/3T3 cells, using 14-3-3 beta/zeta Antibody. The lane on the right is blocked STJ91368



Immunohistochemical analysis of paraffin-embedded human small intestinal carcinoma tissue. 1, Primary antibody was STJ91368



Immunofluorescence analysis of Caco2 cells. 1, Primary antibody was diluted at 1:100 (4°C overnight). 2, Goat Anti STJ91368