

Anti-Phospho-MAP3K11-Ser674 antibody (STJ91362)

GENERAL INFORMATION

Product Type	Primary antibodies
Applications	WB/IHC
Host / Source	Rabbit
Reactivity	Human/Mouse/Rat

PRODUCT PROPERTIES

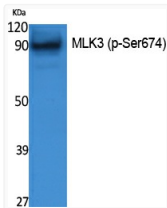
Clonality	Polyclonal
Concentration	1 mg/mL
Conjugation	Unconjugated
Purification	The antibody was affinity-purified from rabbit antiserum by affinity-chromatography using epitope-specific immunogen.
Dilution Range	WB 1:500-2000 IHC-P 1:50-300
Formulation	Liquid in PBS containing 50% Glycerol, 0.5% BSA and 0.02% Sodium Azide.
Isotype	IgG
Molecular Weight	Calculated: 93kD
Storage Instruction	Store at -20°C for up to 1 year from the date of receipt, and avoid repeat freeze-thaw cycles.

TARGET INFORMATION

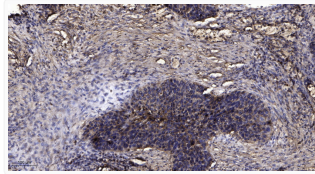
Gene ID	4296
Gene Symbol	MAP3K11
UniProt ID	M3K11_HUMAN
Specificity	Phospho-MLK3 (S674) Polyclonal Antibody detects endogenous levels of MLK3 protein only when phosphorylated at S674.

ADDITIONAL INFORMATION

Note **STRICTLY FOR FURTHER SCIENTIFIC RESEARCH USE ONLY (RUO). MUST NOT TO BE USED IN DIAGNOSTIC OR THERAPEUTIC APPLICATIONS.**



Western blot analysis of extracts from NIH-3T3 cells, using Phospho-MLK3 (S674) Polyclonal Antibody, STJ91362



Immunohistochemical analysis of paraffin-embedded human squamous cell carcinoma of lung. 1, Antibody was diluted at STJ91362