

## Anti-Phospho-NFAT5-Ser1197 antibody (1171-1220 aa) (STJ91355)

### GENERAL INFORMATION

Product Type	Primary antibodies
Applications	WB/IHC
Host / Source	Rabbit
Reactivity	Human/Mouse

### PRODUCT PROPERTIES

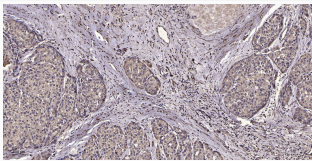
Clonality	Polyclonal
Concentration	1 mg/mL
Conjugation	Unconjugated
Purification	The antibody was affinity-purified from rabbit antiserum by affinity-chromatography using epitope-specific immunogen.
Dilution Range	WB 1:500-2000 IHC-P 1:50-300
Formulation	Liquid in PBS containing 50% Glycerol, 0.5% BSA and 0.02% Sodium Azide.
Isotype	IgG
Molecular Weight	Calculated: 166kD
Storage Instruction	Store at -20°C for up to 1 year from the date of receipt, and avoid repeat freeze-thaw cycles.

### TARGET INFORMATION

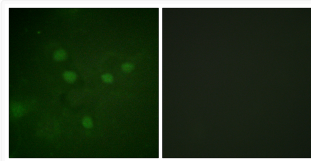
Gene ID	<a href="#">10725</a>
Gene Symbol	<a href="#">NFAT5</a>
UniProt ID	<a href="#">NFAT5_HUMAN</a>
Immunogen Region	1171-1220 aa
Specificity	Phospho-NFAT5 (S1197) Polyclonal Antibody detects endogenous levels of NFAT5 protein only when phosphorylated at S1197.

### ADDITIONAL INFORMATION

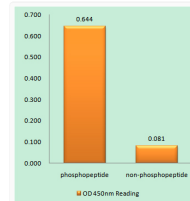
Note **STRICTLY FOR FURTHER SCIENTIFIC RESEARCH USE ONLY (RUO). MUST NOT TO BE USED IN DIAGNOSTIC OR THERAPEUTIC APPLICATIONS.**



Immunohistochemical analysis of paraffin-embedded human liver cancer. 1. Antibody was diluted at 1:200 (4° overnight). STJ91355



Immunofluorescence analysis of COS7 cells using NFAT5 (Phospho-Ser1197) Antibody. The picture on the right is blocked STJ91355



Enzyme-Linked Immunosorbent Assay (Phospho-ELISA) for Immunogen Phosphopeptide (Phospho-left) and Non-Phosphopeptide STJ91355