

Anti-Phospho-TERT-Ser227 antibody (196-245 aa) (STJ91354)

GENERAL INFORMATION

Product Type	Primary antibodies
Applications	IF/ELISA
Host / Source	Rabbit
Reactivity	Human/Rat/Mouse

PRODUCT PROPERTIES

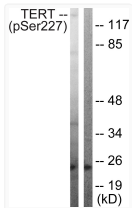
Clonality	Polyclonal
Concentration	1 mg/mL
Conjugation	Unconjugated
Purification	The antibody was affinity-purified from rabbit antiserum by affinity-chromatography using epitope-specific immunogen.
Dilution Range	IF 1:200-1:1000 ELISA 1:10000
Formulation	Liquid in PBS containing 50% Glycerol, 0.5% BSA and 0.02% Sodium Azide.
Isotype	IgG
Molecular Weight	Calculated: 127kD
Storage Instruction	Store at -20°C for up to 1 year from the date of receipt, and avoid repeat freeze-thaw cycles.

TARGET INFORMATION

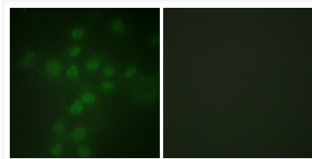
Gene ID	7015
Gene Symbol	TERT
UniProt ID	TERT_HUMAN
Immunogen Region	196-245 aa
Specificity	Phospho-TERT (S227) Polyclonal Antibody detects endogenous levels of TERT protein only when phosphorylated at S227.

ADDITIONAL INFORMATION

Note **STRICTLY FOR FURTHER SCIENTIFIC RESEARCH USE ONLY (RUO). MUST NOT TO BE USED IN DIAGNOSTIC OR THERAPEUTIC APPLICATIONS.**



Western blot analysis of Telomerase (Phospho-Ser227) Antibody. The lane on the right is blocked with the Telomerase (Phospho-Ser227) peptide.



Immunofluorescence analysis of HUVEC cells, using Telomerase (Phospho-Ser227) Antibody. The picture on the right is blocked with the phospho peptide.