

## Anti-Phospho-S1PR1-Thr236 antibody (206-255 aa) (STJ91353)

### GENERAL INFORMATION

Product Type	Primary antibodies
Applications	WB/IF/ELISA
Host / Source	Rabbit
Reactivity	Human/Mouse/Rat

### PRODUCT PROPERTIES

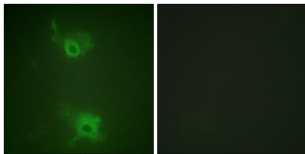
Clonality	Polyclonal
Concentration	1 mg/mL
Conjugation	Unconjugated
Purification	The antibody was affinity-purified from rabbit antiserum by affinity-chromatography using epitope-specific immunogen.
Dilution Range	WB 1:500-2000 IF 1:200-1:1000 ELISA 1:10000
Formulation	Liquid in PBS containing 50% Glycerol, 0.5% BSA and 0.02% Sodium Azide.
Isotype	IgG
Molecular Weight	Observed: 42kD
Storage Instruction	Store at -20°C for up to 1 year from the date of receipt, and avoid repeat freeze-thaw cycles.

### TARGET INFORMATION

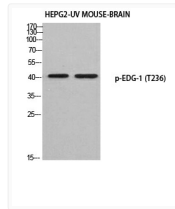
Gene ID	<a href="#">1901</a>
Gene Symbol	<a href="#">S1PR1</a>
UniProt ID	<a href="#">S1PR1_HUMAN</a>
Immunogen Region	206-255 aa
Specificity	Phospho-EDG-1 (T236) Polyclonal Antibody detects endogenous levels of EDG-1 protein only when phosphorylated at T236.

### ADDITIONAL INFORMATION

Note STRICTLY FOR FURTHER SCIENTIFIC RESEARCH USE ONLY (RUO). MUST NOT TO BE USED IN DIAGNOSTIC OR THERAPEUTIC APPLICATIONS.



Immunofluorescence analysis of COS7 cells, using S1P Receptor EDG1 (Phospho-Thr236) Antibody. The picture on the right is blocked with the phospho peptide.



Western blot analysis of HEPG2-UV mouse brain using p-EDG-1 (T236) antibody. Antibody was diluted at 1:500