

Anti-Phospho-MCL1-Ser159 antibody (125-174 aa) (STJ91350)

GENERAL INFORMATION

Product Type	Primary antibodies
Applications	WB/ELISA/IHC
Host / Source	Rabbit
Reactivity	Human/Mouse

PRODUCT PROPERTIES

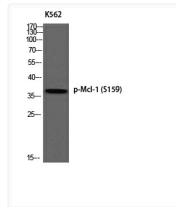
Clonality	Polyclonal
Concentration	1 mg/mL
Conjugation	Unconjugated
Purification	The antibody was affinity-purified from rabbit antiserum by affinity-chromatography using epitope-specific immunogen.
Dilution Range	WB 1:500-2000 IHC-P 1:50-300 ELISA 2000-20000
Formulation	Liquid in PBS containing 50% Glycerol, 0.5% BSA and 0.02% Sodium Azide.
Isotype	IgG
Molecular Weight	Observed: 40kD in human, 39kD in mouse and rat
Storage Instruction	Store at -20°C for up to 1 year from the date of receipt, and avoid repeat freeze-thaw cycles.

TARGET INFORMATION

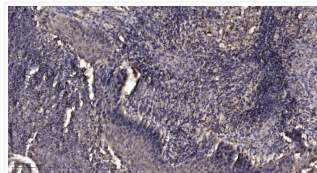
Gene ID	4170
Gene Symbol	MCL1
UniProt ID	MCL1_HUMAN
Immunogen Region	125-174 aa
Specificity	Phospho-Mcl-1 (S159) Polyclonal Antibody detects endogenous levels of Mcl-1 protein only when phosphorylated at S159.

ADDITIONAL INFORMATION

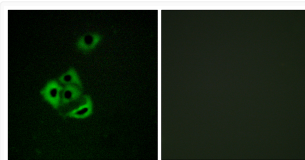
Note STRICTLY FOR FURTHER SCIENTIFIC RESEARCH USE ONLY (RUO). MUST NOT TO BE USED IN DIAGNOSTIC OR THERAPEUTIC APPLICATIONS.



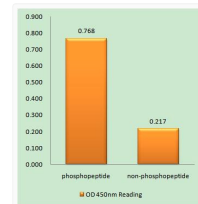
Western blot analysis of K562 using p-Mcl-1 (S159) antibody. STJ91350



Immunohistochemical analysis of paraffin-embedded human squamous cell carcinoma of lung. 1, Antibody was diluted at STJ91350



Immunofluorescence analysis of A549 cells using MCL1 (Phospho-Ser159) Antibody. The picture on the right is blocked STJ91350



Enzyme-Linked Immunosorbent Assay (Phospho-ELISA) for Immunogenic Phosphopeptide (Phospho-left) and Non-Phosphopeptide (Phospho-right) using STJ91350