

## Anti-Phospho-HCK-Tyr410 antibody (381-430 aa) (STJ91341)

### GENERAL INFORMATION

Product Type	Primary antibodies
Applications	IHC/IF/ELISA
Host / Source	Rabbit
Reactivity	Human/Mouse/Rat

### PRODUCT PROPERTIES

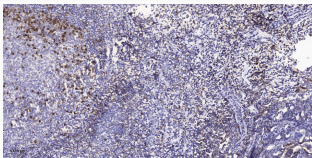
Clonality	Polyclonal
Concentration	1 mg/mL
Conjugation	Unconjugated
Purification	The antibody was affinity-purified from rabbit antiserum by affinity-chromatography using epitope-specific immunogen.
Dilution Range	IHC 1:100-1:300 IF 1:200-1:1000 ELISA 1:20000
Formulation	Liquid in PBS containing 50% Glycerol, 0.5% BSA and 0.02% Sodium Azide.
Isotype	IgG
Molecular Weight	Calculated: 60kD
Storage Instruction	Store at -20°C for up to 1 year from the date of receipt, and avoid repeat freeze-thaw cycles.

### TARGET INFORMATION

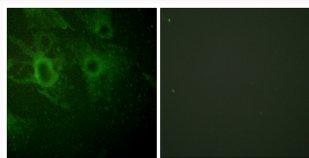
Gene ID	<a href="#">3055</a>
Gene Symbol	<a href="#">HCK</a>
UniProt ID	<a href="#">HCK_HUMAN</a>
Immunogen Region	381-430 aa
Specificity	Phospho-Hck (Y410) Polyclonal Antibody detects endogenous levels of Hck protein only when phosphorylated at Y410.

### ADDITIONAL INFORMATION

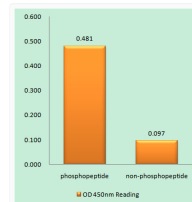
Note: STRICTLY FOR FURTHER SCIENTIFIC RESEARCH USE ONLY (RUO). MUST NOT TO BE USED IN DIAGNOSTIC OR THERAPEUTIC APPLICATIONS.



Immunohistochemical analysis of paraffin-embedded human tonsil. 1, Antibody was diluted at 1:200 (4°C overnight). 2, STJ91341



Immunofluorescence analysis of HeLa cells using HCK (Phospho-Tyr410) Antibody. The image on the right is blocked with STJ91341



Enzyme-Linked Immunosorbent Assay (Phospho-ELISA) for Immunogenic Phosphopeptide (Phospho-left) and Non-Phosphopeptide STJ91341