

Anti-Phospho-KCNB1-Ser567 antibody (533-582 aa) (STJ91316)

GENERAL INFORMATION

Product Type	Primary antibodies
Applications	IHC/IF/ELISA
Host / Source	Rabbit
Reactivity	Human/Mouse/Rat

PRODUCT PROPERTIES

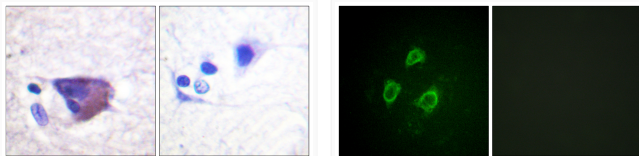
Clonality	Polyclonal
Concentration	1 mg/mL
Conjugation	Unconjugated
Purification	The antibody was affinity-purified from rabbit antiserum by affinity-chromatography using epitope-specific immunogen.
Dilution Range	IHC 1:100-1:300 IF 1:200-1:1000 ELISA 1:10000
Formulation	Liquid in PBS containing 50% Glycerol, 0.5% BSA and 0.02% Sodium Azide.
Isotype	IgG
Molecular Weight	Calculated: 96kD
Storage Instruction	Store at -20°C for up to 1 year from the date of receipt, and avoid repeat freeze-thaw cycles.

TARGET INFORMATION

Gene ID	3745
Gene Symbol	KCNB1
UniProt ID	KCNB1_HUMAN
Immunogen Region	533-582 aa
Specificity	Phospho-Kv2.1 (S567) Polyclonal Antibody detects endogenous levels of Kv2.1 protein only when phosphorylated at S567.

ADDITIONAL INFORMATION

Note STRICTLY FOR FURTHER SCIENTIFIC RESEARCH USE ONLY (RUO). MUST NOT TO BE USED IN DIAGNOSTIC OR THERAPEUTIC APPLICATIONS.



Immunohistochemistry analysis of paraffin-embedded human brain, using Kv2.1/KCNB1 (Phospho-Ser567) Antibody. The picture on the right is blocked with the phospho peptide.

Immunofluorescence analysis of HepG2 cells, using Kv2.1/KCNB1 (Phospho-Ser567) Antibody. The picture on the right is blocked with the phospho peptide.