

Anti-Phospho-ITPR1-Ser1598 antibody (1566-1615 aa) (STJ91314)

GENERAL INFORMATION

Product Type	Primary antibodies
Applications	IHC/IF/ELISA
Host / Source	Rabbit
Reactivity	Human/Mouse/Rat

PRODUCT PROPERTIES

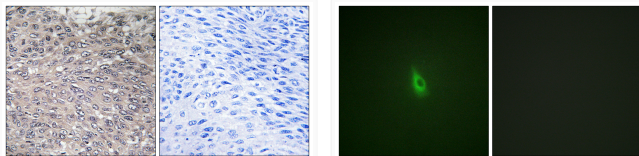
Clonality	Polyclonal
Concentration	1 mg/mL
Conjugation	Unconjugated
Purification	The antibody was affinity-purified from rabbit antiserum by affinity-chromatography using epitope-specific immunogen.
Dilution Range	IHC 1:100-1:300 IF 1:200-1:1000 ELISA 1:10000
Formulation	Liquid in PBS containing 50% Glycerol, 0.5% BSA and 0.02% Sodium Azide.
Isotype	IgG
Molecular Weight	Calculated: 314kD
Storage Instruction	Store at -20°C for up to 1 year from the date of receipt, and avoid repeat freeze-thaw cycles.

TARGET INFORMATION

Gene ID	3708
Gene Symbol	ITPR1
UniProt ID	ITPR1_HUMAN
Immunogen Region	1566-1615 aa
Specificity	Phospho-IP3R-I (S1598) Polyclonal Antibody detects endogenous levels of IP3R-I protein only when phosphorylated at S1598.

ADDITIONAL INFORMATION

Note STRICTLY FOR FURTHER SCIENTIFIC RESEARCH USE ONLY (RUO). MUST NOT TO BE USED IN DIAGNOSTIC OR THERAPEUTIC APPLICATIONS.



Immunohistochemistry analysis of paraffin-embedded human cervix carcinoma, using Inositol 1, 4, 5-trisphosphate R1 (Phospho-Ser1598/1588) Antibody. The picture on the right is blocked with the phospho peptide.

Immunofluorescence analysis of A549 cells, using Inositol 1, 4, 5-trisphosphate R1 (Phospho-Ser1598/1588) Antibody. The picture on the right is blocked with the phospho peptide.