

## Anti-Phospho-DDX3X-Thr322 antibody (466-515 aa) (STJ91303)

### GENERAL INFORMATION

Product Type	Primary antibodies
Applications	IHC/IF/ELISA
Host / Source	Rabbit
Reactivity	Human/Mouse/Rat

### PRODUCT PROPERTIES

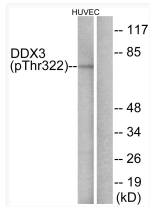
Clonality	Polyclonal
Concentration	1 mg/mL
Conjugation	Unconjugated
Purification	The antibody was affinity-purified from rabbit antiserum by affinity-chromatography using epitope-specific immunogen.
Dilution Range	IHC 1:100-1:300 IF 1:200-1:1000 ELISA 1:10000
Formulation	Liquid in PBS containing 50% Glycerol, 0.5% BSA and 0.02% Sodium Azide.
Isotype	IgG
Molecular Weight	Calculated: 73kD
Storage Instruction	Store at -20°C for up to 1 year from the date of receipt, and avoid repeat freeze-thaw cycles.

### TARGET INFORMATION

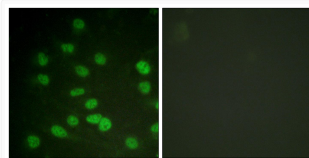
Gene ID	<a href="#">1654</a>
Gene Symbol	<a href="#">DDX3X</a>
UniProt ID	<a href="#">DDX3X_HUMAN</a>
Immunogen Region	466-515 aa
Specificity	Phospho-DDX3 (T322) Polyclonal Antibody detects endogenous levels of DDX3 protein only when phosphorylated at T322.

### ADDITIONAL INFORMATION

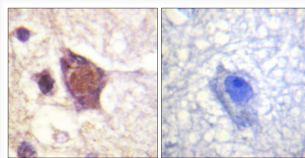
Note STRICTLY FOR FURTHER SCIENTIFIC RESEARCH USE ONLY (RUO). MUST NOT TO BE USED IN DIAGNOSTIC OR THERAPEUTIC APPLICATIONS.



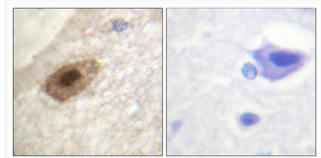
Western blot analysis of DDX3/DEAD-box Protein 3 (Phospho-Thr322) Antibody. The lane on the right is blocked with the DDX3/DEAD-box Protein 3 (Phospho-Thr322) peptide.



Immunofluorescence analysis of HUVEC cells treated with serum 20% 30', using DDX3/DEAD-box Protein 3 (Phospho-Thr322) Antibody. The picture on the right is blocked with the phospho peptide.



Immunohistochemistry analysis of paraffin-embedded human brain, using DDX3/DEAD-box Protein 3 (Phospho-Thr322) Antibody. The picture on the right is blocked with the phospho peptide.



Immunohistochemical analysis of paraffin-embedded Human brain. Antibody was diluted at 1:100 (4°C overnight). High-pressure and temperature Tris-EDTA, pH8.0 was used for antigen retrieval. Negative control (right) obtained from antibody was pre-absorbed by immunogen peptide.