

Anti-Phospho-JUN-Thr231 antibody (201-250 aa) (STJ91299)

GENERAL INFORMATION

Product Type	Primary antibodies
Applications	IHC/IF/ELISA
Host / Source	Rabbit
Reactivity	Human/Mouse/Rat

PRODUCT PROPERTIES

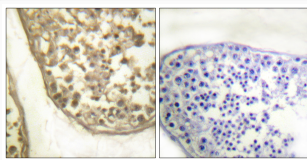
Clonality	Polyclonal
Concentration	1 mg/mL
Conjugation	Unconjugated
Purification	The antibody was affinity-purified from rabbit antiserum by affinity-chromatography using epitope-specific immunogen.
Dilution Range	IHC 1:100-1:300 IF 1:200-1:1000 ELISA 1:10000
Formulation	Liquid in PBS containing 50% Glycerol, 0.5% BSA and 0.02% Sodium Azide.
Isotype	IgG
Molecular Weight	Observed: 39-42kD
Storage Instruction	Store at -20°C for up to 1 year from the date of receipt, and avoid repeat freeze-thaw cycles.

TARGET INFORMATION

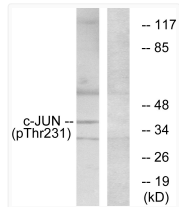
Gene ID	3725
Gene Symbol	JUN
UniProt ID	JUN_HUMAN
Immunogen Region	201-250 aa
Specificity	Phospho-AP-1 (T231) Polyclonal Antibody detects endogenous levels of AP-1 protein only when phosphorylated at T231.

ADDITIONAL INFORMATION

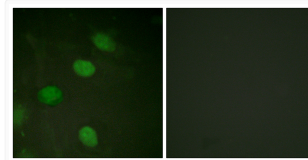
Note **STRICTLY FOR FURTHER SCIENTIFIC RESEARCH USE ONLY (RUO). MUST NOT TO BE USED IN DIAGNOSTIC OR THERAPEUTIC APPLICATIONS.**



Immunohistochemistry analysis of paraffin-embedded human testis, using c-Jun (Phospho-Thr231) Antibody. The picture on the right is blocked with the phospho peptide.



Western blot analysis of c-Jun (Phospho-Thr231) Antibody. The lane on the right is blocked with the c-Jun (Phospho-Thr231) peptide.



Immunofluorescence analysis of HeLa cells, using c-Jun (Phospho-Thr231) Antibody. The picture on the right is blocked with the phospho peptide.