

## Anti-Phospho-ERF-Thr526 antibody (492-541 aa) (STJ91289)

### GENERAL INFORMATION

Product Type	Primary antibodies
Applications	WB/IHC/IF/ELISA
Host / Source	Rabbit
Reactivity	Human/Mouse

### PRODUCT PROPERTIES

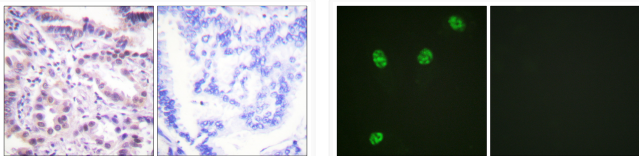
Clonality	Polyclonal
Concentration	1 mg/mL
Conjugation	Unconjugated
Purification	The antibody was affinity-purified from rabbit antiserum by affinity-chromatography using epitope-specific immunogen.
Dilution Range	WB 1:500-1:2000 IHC 1:100-1:300 IF 1:200-1:1000 ELISA 1:20000
Formulation	Liquid in PBS containing 50% Glycerol, 0.5% BSA and 0.02% Sodium Azide.
Isotype	IgG
Molecular Weight	Observed: 58kD
Storage Instruction	Store at -20°C for up to 1 year from the date of receipt, and avoid repeat freeze-thaw cycles.

### TARGET INFORMATION

Gene ID	<a href="#">2077</a>
Gene Symbol	<a href="#">ERF</a>
UniProt ID	<a href="#">ERF_HUMAN</a>
Immunogen Region	492-541 aa
Specificity	Phospho-ERF (T526) Polyclonal Antibody detects endogenous levels of ERF protein only when phosphorylated at T526.

### ADDITIONAL INFORMATION

Note **STRICTLY FOR FURTHER SCIENTIFIC RESEARCH USE ONLY (RUO). MUST NOT TO BE USED IN DIAGNOSTIC OR THERAPEUTIC APPLICATIONS.**



Immunohistochemistry analysis of paraffin-embedded human lung carcinoma, using ERF (Phospho-Thr526) Antibody. The picture on the right is blocked with the phospho peptide.

Immunofluorescence analysis of HeLa cells, using ERF (Phospho-Thr526) Antibody. The picture on the right is blocked with the phospho peptide.