

Anti-Phospho-CDC25C-Ser198 antibody (164-213 aa) (STJ91245)

GENERAL INFORMATION

Product Type	Primary antibodies
Applications	IHC/IF/ELISA
Host / Source	Rabbit
Reactivity	Human/Rat/Mouse

PRODUCT PROPERTIES

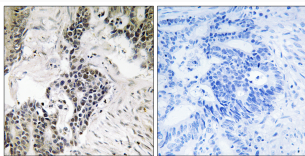
Clonality	Polyclonal
Concentration	1 mg/mL
Conjugation	Unconjugated
Purification	The antibody was affinity-purified from rabbit antiserum by affinity-chromatography using epitope-specific immunogen.
Dilution Range	IHC 1:100-1:300 ELISA 1:5000 IF 1:50-200
Formulation	Liquid in PBS containing 50% Glycerol, 0.5% BSA and 0.02% Sodium Azide.
Isotype	IgG
Molecular Weight	Calculated: 53kD
Storage Instruction	Store at -20°C for up to 1 year from the date of receipt, and avoid repeat freeze-thaw cycles.

TARGET INFORMATION

Gene ID	995
Gene Symbol	CDC25C
UniProt ID	MPIP3_HUMAN
Immunogen Region	164-213 aa
Specificity	Phospho-Cdc25C (S198) Polyclonal Antibody detects endogenous levels of Cdc25C protein only when phosphorylated at S198.

ADDITIONAL INFORMATION

Note **STRICTLY FOR FURTHER SCIENTIFIC RESEARCH USE ONLY (RUO). MUST NOT TO BE USED IN DIAGNOSTIC OR THERAPEUTIC APPLICATIONS.**



Immunohistochemistry analysis of paraffin-embedded human colon carcinoma, using CDC25C (Phospho-Ser198) Antibody. The picture on the right is blocked with the phospho peptide.