

## Anti-Phospho-Histone H2A-Thr121 antibody (81-130 aa) (STJ91231)

### GENERAL INFORMATION

Product Type	Primary antibodies
Applications	WB/IHC/IF/ELISA
Host / Source	Rabbit
Reactivity	Human/Mouse/Rat

### PRODUCT PROPERTIES

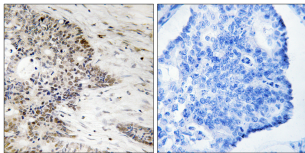
Clonality	Polyclonal
Concentration	1 mg/mL
Conjugation	Unconjugated
Purification	The antibody was affinity-purified from rabbit antiserum by affinity-chromatography using epitope-specific immunogen.
Dilution Range	WB 1:500-2000 IHC 1:100-1:300 ELISA 1:5000 IF 1:50-200
Formulation	Liquid in PBS containing 50% Glycerol, 0.5% BSA and 0.02% Sodium Azide.
Isotype	IgG
Molecular Weight	Calculated: 14kD
Storage Instruction	Store at -20°C for up to 1 year from the date of receipt, and avoid repeat freeze-thaw cycles.

### TARGET INFORMATION

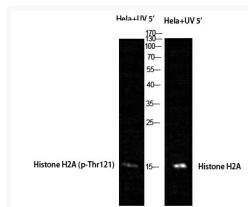
Gene ID	<a href="#">3012/8335</a> <a href="#">3013</a>
Gene Symbol	<a href="#">H2AC4.H2AC8</a> <a href="#">H2AC7</a> <a href="#">H2A1B_HUMAN</a> <a href="#">H2A1D_HUMAN</a> <a href="#">H2A1_HUMAN</a> <
Immunogen Region	81-130 aa
Specificity	Phospho-Histone H2A (T121) Polyclonal Antibody detects endogenous levels of Histone H2A protein only when phosphorylated at T121.

### ADDITIONAL INFORMATION

Note STRICTLY FOR FURTHER SCIENTIFIC RESEARCH USE ONLY (RUO). MUST NOT TO BE USED IN DIAGNOSTIC OR THERAPEUTIC APPLICATIONS.



Immunohistochemistry analysis of paraffin-embedded human colon carcinoma, using Histone H2A (Phospho-Thr121) Antibody. The picture on the right is blocked with the phospho peptide.



Western blot analysis of HeLa+UV 5' cells using Phospho-Histone H2A (T121) Polyclonal Antibody cells nucleus extracted by Minute TM Cytoplasmic and Nuclear Fractionation kit (SC-003, Inventibiotech, MN, USA).