

## Anti-Phospho-Ephrin-B1/2-Tyr329 antibody (295-344 aa) (STJ91226)

### GENERAL INFORMATION

Product Type	Primary antibodies
Applications	IHC/IF/ELISA
Host / Source	Rabbit
Reactivity	Human/Mouse/Rat

### PRODUCT PROPERTIES

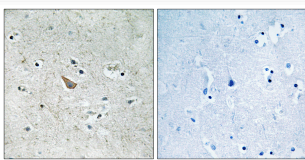
Clonality	Polyclonal
Concentration	1 mg/mL
Conjugation	Unconjugated
Purification	The antibody was affinity-purified from rabbit antiserum by affinity-chromatography using epitope-specific immunogen.
Dilution Range	IHC 1:100-1:300 ELISA 1:10000 IF 1:50-200
Formulation	Liquid in PBS containing 50% Glycerol, 0.5% BSA and 0.02% Sodium Azide.
Isotype	IgG
Molecular Weight	Calculated: 37kD
Storage Instruction	Store at -20°C for up to 1 year from the date of receipt, and avoid repeat freeze-thaw cycles.

### TARGET INFORMATION

Gene ID	<a href="#">1947</a> <a href="#">1948</a>
Gene Symbol	<a href="#">EFNB1</a> <a href="#">EFNB2</a>
UniProt ID	<a href="#">EFNB1_HUMAN</a> <a href="#">EFNB2_HUMAN</a>
Immunogen Region	295-344 aa
Specificity	Phospho-Ephrin-B1/2 (Y329) Polyclonal Antibody detects endogenous levels of Ephrin-B1/2 protein only when phosphorylated at Y329.

### ADDITIONAL INFORMATION

Note **STRICTLY FOR FURTHER SCIENTIFIC RESEARCH USE ONLY (RUO). MUST NOT TO BE USED IN DIAGNOSTIC OR THERAPEUTIC APPLICATIONS.**



Immunohistochemistry analysis of paraffin-embedded human brain, using Ephrin B1/B2 (Phospho-Tyr329) Antibody. The picture on the right is blocked with the phospho peptide.