

Anti-Phospho-FLT1-Tyr1048 antibody (1016-1065 aa) (STJ91223)

GENERAL INFORMATION

Product Type	Primary antibodies
Applications	WB/IHC/IF/ELISA
Host / Source	Rabbit
Reactivity	Human/Mouse/Rat

PRODUCT PROPERTIES

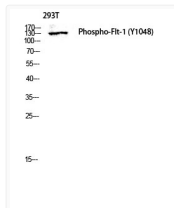
Clonality	Polyclonal
Concentration	1 mg/mL
Conjugation	Unconjugated
Purification	The antibody was affinity-purified from rabbit antiserum by affinity-chromatography using epitope-specific immunogen.
Dilution Range	WB 1:500-2000 IHC 1:100-1:300 ELISA 1:5000 IF 1:50-200
Formulation	Liquid in PBS containing 50% Glycerol, 0.5% BSA and 0.02% Sodium Azide.
Isotype	IgG
Molecular Weight	Observed: 150kD
Storage Instruction	Store at -20°C for up to 1 year from the date of receipt, and avoid repeat freeze-thaw cycles.

TARGET INFORMATION

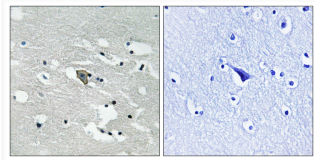
Gene ID	2321
Gene Symbol	FLT1
UniProt ID	VGFR1_HUMAN
Immunogen Region	1016-1065 aa
Specificity	Phospho-Flt-1 (Y1048) Polyclonal Antibody detects endogenous levels of Flt-1 protein only when phosphorylated at Y1048.

ADDITIONAL INFORMATION

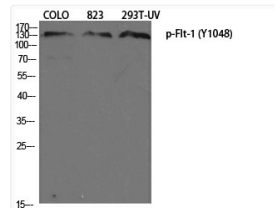
Note **STRICTLY FOR FURTHER SCIENTIFIC RESEARCH USE ONLY (RUO). MUST NOT TO BE USED IN DIAGNOSTIC OR THERAPEUTIC APPLICATIONS.**



Western blot analysis of 293T lysis using Phospho-Flt-1 (Y1048) antibody. Antibody was diluted at 1:1000



Immunohistochemistry analysis of paraffin-embedded human brain, using VEGFR1 (Phospho-Tyr1048) Antibody. The picture on the right is blocked with the phospho peptide.



Western blot analysis of various cells using Phospho-Flt-1 (Y1048) Polyclonal Antibody diluted at 1: 1000