

Anti-Phospho-EphA3/4/5-Tyr779/833 antibody (746-795 aa) (STJ91201)

GENERAL INFORMATION

| | |
|---------------|--------------------|
| Product Type | Primary antibodies |
| Applications | IHC/IF/ELISA |
| Host / Source | Rabbit |
| Reactivity | Human/Mouse/Rat |

PRODUCT PROPERTIES

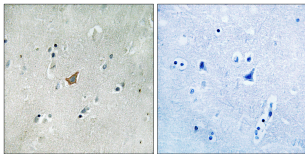
| | |
|---------------------|---|
| Clonality | Polyclonal |
| Concentration | 1 mg/mL |
| Conjugation | Unconjugated |
| Purification | The antibody was affinity-purified from rabbit antiserum by affinity-chromatography using epitope-specific immunogen. |
| Dilution Range | IHC 1:100-1:300 ELISA 1:10000 IF 1:50-200 |
| Formulation | Liquid in PBS containing 50% Glycerol, 0.5% BSA and 0.02% Sodium Azide. |
| Isotype | IgG |
| Molecular Weight | Observed: 110kD |
| Storage Instruction | Store at -20°C for up to 1 year from the date of receipt, and avoid repeat freeze-thaw cycles. |

TARGET INFORMATION

| | |
|------------------|---|
| Gene ID | 2042 2043 2044 EPHA3 EPHA4 EPHA3_HUMAN EPHA4_HUMAN EPHA5_HUMAN |
| Immunogen Region | 746-795 aa |
| Specificity | Phospho-EphA3/4/5 (Y779/833) Polyclonal Antibody detects endogenous levels of EphA3/4/5 protein only when phosphorylated at Y779/833. |

ADDITIONAL INFORMATION

Note STRICTLY FOR FURTHER SCIENTIFIC RESEARCH USE ONLY (RUO). MUST NOT TO BE USED IN DIAGNOSTIC OR THERAPEUTIC APPLICATIONS.



Immunohistochemistry analysis of paraffin-embedded human brain, using EPHA3/4/5 (Phospho-Tyr779/833) Antibody. The picture on the right is blocked with the phospho peptide.