

## Anti-Phospho-Casein Kinase I Gamma 1/2/3-Tyr263 antibody (229-278 aa) (STJ91200)

### GENERAL INFORMATION

Product Type	Primary antibodies
Applications	IHC/IF/ELISA
Host / Source	Rabbit
Reactivity	Human/Mouse/Rat

### PRODUCT PROPERTIES

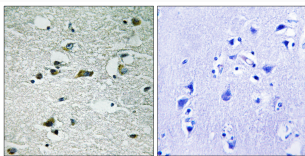
Clonality	Polyclonal
Concentration	1 mg/mL
Conjugation	Unconjugated
Purification	The antibody was affinity-purified from rabbit antiserum by affinity-chromatography using epitope-specific immunogen.
Dilution Range	IHC 1:100-1:300 ELISA 1:20000 IF 1:50-200
Formulation	Liquid in PBS containing 50% Glycerol, 0.5% BSA and 0.02% Sodium Azide.
Isotype	IgG
Molecular Weight	Calculated: 50kD
Storage Instruction	Store at -20°C for up to 1 year from the date of receipt, and avoid repeat freeze-thaw cycles.

### TARGET INFORMATION

Gene ID	<a href="#">53944</a> <a href="#">1456</a> <a href="#">1455</a> <a href="#">CSNK1G1</a> <a href="#">CSNK1G3</a> <a href="#">KC1G1_HUMAN</a> <a href="#">KC1G3_HUMAN</a> <a href="#">KC1G2_HUMAN</a>
Immunogen Region	229-278 aa
Specificity	Phospho-Casein Kinase I Gamma 1/2/3 (Y263) Polyclonal Antibody detects endogenous levels of Casein Kinase I Gamma 1/2/3 protein only when phosphorylated at Y263.

### ADDITIONAL INFORMATION

Note STRICTLY FOR FURTHER SCIENTIFIC RESEARCH USE ONLY (RUO). MUST NOT TO BE USED IN DIAGNOSTIC OR THERAPEUTIC APPLICATIONS.



Immunohistochemistry analysis of paraffin-embedded human brain, using CK-1 gamma1/2/3 (Phospho-Tyr263) Antibody. The picture on the right is blocked with the phospho peptide.