

## Anti-Phospho-IGF1R-Tyr1346 antibody (1311-1360 aa) (STJ91187)

### GENERAL INFORMATION

Product Type	Primary antibodies
Applications	IHC/IF/ELISA
Host / Source	Rabbit
Reactivity	Human/Mouse/Rat

### PRODUCT PROPERTIES

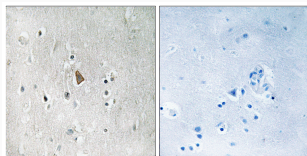
Clonality	Polyclonal
Concentration	1 mg/mL
Conjugation	Unconjugated
Purification	The antibody was affinity-purified from rabbit antiserum by affinity-chromatography using epitope-specific immunogen.
Dilution Range	IHC 1:100-1:300 ELISA 1:40000 IF 1:50-200
Formulation	Liquid in PBS containing 50% Glycerol, 0.5% BSA and 0.02% Sodium Azide.
Isotype	IgG
Molecular Weight	Calculated: 155kD Observed: pro:155kD, receter beta:95kD
Storage Instruction	Store at -20°C for up to 1 year from the date of receipt, and avoid repeat freeze-thaw cycles.

### TARGET INFORMATION

Gene ID	<a href="#">3480</a>
Gene Symbol	<a href="#">IGF1R</a>
UniProt ID	<a href="#">IGF1R_HUMAN</a>
Immunogen Region	1311-1360 aa
Specificity	Phospho-IGF-IR (Y1346) Polyclonal Antibody detects endogenous levels of IGF-IR protein only when phosphorylated at Y1346.

### ADDITIONAL INFORMATION

Note STRICTLY FOR FURTHER SCIENTIFIC RESEARCH USE ONLY (RUO). MUST NOT TO BE USED IN DIAGNOSTIC OR THERAPEUTIC APPLICATIONS.



Immunohistochemistry analysis of paraffin-embedded human brain, using IGF1R (Phospho-Tyr1346) Antibody. The picture on the right is blocked with the phospho peptide.