

Anti-Phospho-NCF1-Ser370 antibody (341-390 aa) (STJ91180)

GENERAL INFORMATION

Product Type	Primary antibodies
Applications	WB/IHC/IF/ELISA
Host / Source	Rabbit
Reactivity	Human/Mouse/Rat

PRODUCT PROPERTIES

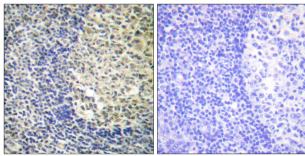
Clonality	Polyclonal
Concentration	1 mg/mL
Conjugation	Unconjugated
Purification	The antibody was affinity-purified from rabbit antiserum by affinity-chromatography using epitope-specific immunogen.
Dilution Range	WB 1:500-1:2000 IHC 1:100-1:300 ELISA 1:5000 IF 1:50-200
Formulation	Liquid in PBS containing 50% Glycerol, 0.5% BSA and 0.02% Sodium Azide.
Isotype	IgG
Molecular Weight	Calculated: 45kD
Storage Instruction	Store at -20°C for up to 1 year from the date of receipt, and avoid repeat freeze-thaw cycles.

TARGET INFORMATION

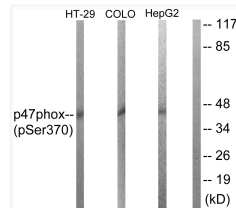
Gene ID	653361
Gene Symbol	NCF1
UniProt ID	NCF1_HUMAN
Immunogen Region	341-390 aa
Specificity	Phospho-p47-phox (S370) Polyclonal Antibody detects endogenous levels of p47-phox protein only when phosphorylated at S370.

ADDITIONAL INFORMATION

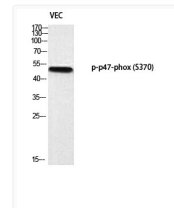
Note **STRICTLY FOR FURTHER SCIENTIFIC RESEARCH USE ONLY (RUO). MUST NOT TO BE USED IN DIAGNOSTIC OR THERAPEUTIC APPLICATIONS.**



Immunohistochemistry analysis of paraffin-embedded human tonsil, using p47 phox (Phospho-Ser370) Antibody. The picture on the right is blocked with the phospho peptide.



Western blot analysis of p47 phox (Phospho-Ser370) Antibody. The lane on the right is blocked with the p47 phox (Phospho-Ser370) peptide.



Western blot analysis of VEC using p-p47-phox (S370) antibody.