

Anti-Phospho-ARK-2/3-Thr236/202 antibody (201-250 aa) (STJ91175)

GENERAL INFORMATION

Product Type	Primary antibodies
Applications	IHC/IF/ELISA
Host / Source	Rabbit
Reactivity	Human/Mouse/Rat

PRODUCT PROPERTIES

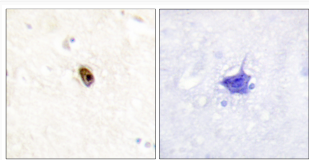
Clonality	Polyclonal
Concentration	1 mg/mL
Conjugation	Unconjugated
Purification	The antibody was affinity-purified from rabbit antiserum by affinity-chromatography using epitope-specific immunogen.
Dilution Range	IHC 1:100-1:300 ELISA 1:10000 IF 1:50-200
Formulation	Liquid in PBS containing 50% Glycerol, 0.5% BSA and 0.02% Sodium Azide.
Isotype	IgG
Molecular Weight	Calculated: 35-40kD
Storage Instruction	Store at -20°C for up to 1 year from the date of receipt, and avoid repeat freeze-thaw cycles.

TARGET INFORMATION

Gene ID	9212 6795
Gene Symbol	AURKB AURKC
UniProt ID	AURKB_HUMAN AURKC_HUMAN
Immunogen Region	201-250 aa
Specificity	Phospho-ARK-2/3 (T236/202) Polyclonal Antibody detects endogenous levels of ARK-2/3 protein only when phosphorylated at T236/202.

ADDITIONAL INFORMATION

Note **STRICTLY FOR FURTHER SCIENTIFIC RESEARCH USE ONLY (RUO). MUST NOT TO BE USED IN DIAGNOSTIC OR THERAPEUTIC APPLICATIONS.**



Immunohistochemistry analysis of paraffin-embedded human brain, using AurB/C (Phospho-Thr236/202) Antibody. The picture on the right is blocked with the phospho peptide.