

Anti-Phospho-PDGFRB-Tyr1021 antibody (991-1040 aa) (STJ91154)

GENERAL INFORMATION

Product Type	Primary antibodies
Applications	WB/IHC/IF/ELISA
Host / Source	Rabbit
Reactivity	Human/Mouse/Rat

PRODUCT PROPERTIES

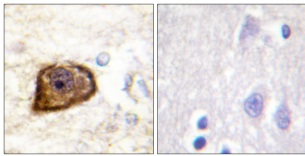
Clonality	Polyclonal
Concentration	1 mg/mL
Conjugation	Unconjugated
Purification	The antibody was affinity-purified from rabbit antiserum by affinity-chromatography using epitope-specific immunogen.
Dilution Range	WB 1:500-2000 IHC 1:100-1:300 ELISA 1:5000 IF 1:50-200
Formulation	Liquid in PBS containing 50% Glycerol, 0.5% BSA and 0.02% Sodium Azide.
Isotype	IgG
Molecular Weight	Observed: 135-180kD
Storage Instruction	Store at -20°C for up to 1 year from the date of receipt, and avoid repeat freeze-thaw cycles.

TARGET INFORMATION

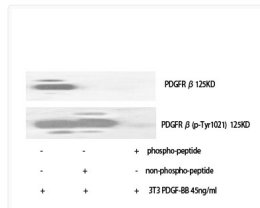
Gene ID	5159
Gene Symbol	PDGFRB
UniProt ID	PGFRB_HUMAN
Immunogen Region	991-1040 aa
Specificity	Phospho-PDGFR-Beta (Y1021) Polyclonal Antibody detects endogenous levels of PDGFR-Beta protein only when phosphorylated at Y1021.

ADDITIONAL INFORMATION

Note **STRICTLY FOR FURTHER SCIENTIFIC RESEARCH USE ONLY (RUO). MUST NOT TO BE USED IN DIAGNOSTIC OR THERAPEUTIC APPLICATIONS.**



Immunohistochemistry analysis of paraffin-embedded human brain, using PDGFR beta (Phospho-Tyr1021) Antibody. The picture on the right is blocked with the phospho peptide.



Western blot analysis of various cells using Phospho-PDGFR-Beta (Y1021) Polyclonal Antibody