

## Anti-Phospho-IFNAR1-Tyr466 antibody (436-485 aa) (STJ91149)

### GENERAL INFORMATION

Product Type	Primary antibodies
Applications	WB/IHC/IF/ELISA
Host / Source	Rabbit
Reactivity	Human/Rat/Mouse

### PRODUCT PROPERTIES

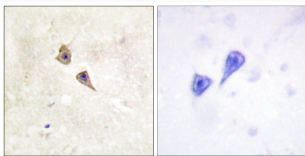
Clonality	Polyclonal
Concentration	1 mg/mL
Conjugation	Unconjugated
Purification	The antibody was affinity-purified from rabbit antiserum by affinity-chromatography using epitope-specific immunogen.
Dilution Range	WB 1:500-1:2000 IHC 1:100-1:300 ELISA 1:10000 IF 1:50-200
Formulation	Liquid in PBS containing 50% Glycerol, 0.5% BSA and 0.02% Sodium Azide.
Isotype	IgG
Molecular Weight	Observed: 63kD
Storage Instruction	Store at -20°C for up to 1 year from the date of receipt, and avoid repeat freeze-thaw cycles.

### TARGET INFORMATION

Gene ID	<a href="#">3454</a>
Gene Symbol	<a href="#">IFNAR1</a>
UniProt ID	<a href="#">INAR1_HUMAN</a>
Immunogen Region	436-485 aa
Specificity	Phospho-IFN-Alpha/Beta R Alpha (Y466) Polyclonal Antibody detects endogenous levels of IFN-Alpha/Beta R Alpha protein only when phosphorylated at Y466.

### ADDITIONAL INFORMATION

Note STRICTLY FOR FURTHER SCIENTIFIC RESEARCH USE ONLY (RUO). MUST NOT TO BE USED IN DIAGNOSTIC OR THERAPEUTIC APPLICATIONS.



Immunohistochemistry analysis of paraffin-embedded human brain, using Interferon-alpha/beta Receptor alpha (Phospho-Tyr466) Antibody. The picture on the right is blocked with the phospho peptide.