

## Anti-Phospho-Actin-Alpha/Gamma-Tyr55/53 antibody (21-70 aa) (STJ91137)

### GENERAL INFORMATION

Product Type	Primary antibodies
Applications	IHC/IF/ELISA
Host / Source	Rabbit
Reactivity	Human/Mouse/Rat

### PRODUCT PROPERTIES

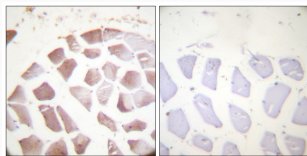
Clonality	Polyclonal
Concentration	1 mg/mL
Conjugation	Unconjugated
Purification	The antibody was affinity-purified from rabbit antiserum by affinity-chromatography using epitope-specific immunogen.
Dilution Range	IHC 1:100-1:300 ELISA 1:5000 IF 1:50-200
Formulation	Liquid in PBS containing 50% Glycerol, 0.5% BSA and 0.02% Sodium Azide.
Isotype	IgG
Molecular Weight	Calculated: 42kD
Storage Instruction	Store at -20°C for up to 1 year from the date of receipt, and avoid repeat freeze-thaw cycles.

### TARGET INFORMATION

Gene ID	<a href="#">58</a> <a href="#">70</a> <a href="#">72</a> <a href="#">ACTA1</a> <a href="#">ACTC1</a> <a href="#">ACTS_HUMAN</a> <a href="#">ACTC_HUMAN</a> <a href="#">ACTH_HUMAN</a>
Immunogen Region	21-70 aa
Specificity	Phospho-Actin-Alpha/Gamma (Y55/53) Polyclonal Antibody detects endogenous levels of Actin-Alpha/Gamma protein only when phosphorylated at Y55/53.

### ADDITIONAL INFORMATION

Note STRICTLY FOR FURTHER SCIENTIFIC RESEARCH USE ONLY (RUO). MUST NOT TO BE USED IN DIAGNOSTIC OR THERAPEUTIC APPLICATIONS.



Immunohistochemistry analysis of paraffin-embedded human skeletal muscle, using Actin-pan (alpha/gamma) (Phospho-Tyr55/53) Antibody. The picture on the right is blocked with the phospho peptide.