

## Anti-Phospho-TEK-Tyr1102 antibody (1068-1117 aa) (STJ91136)

### GENERAL INFORMATION

Product Type	Primary antibodies
Applications	IHC/IF/ELISA
Host / Source	Rabbit
Reactivity	Human/Mouse

### PRODUCT PROPERTIES

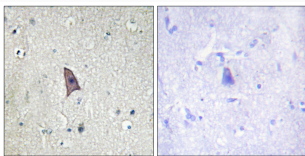
Clonality	Polyclonal
Concentration	1 mg/mL
Conjugation	Unconjugated
Purification	The antibody was affinity-purified from rabbit antiserum by affinity-chromatography using epitope-specific immunogen.
Dilution Range	WB 1:500-2000 IHC 1:100-1:300 ELISA 1:40000 IF 1:50-200
Formulation	Liquid in PBS containing 50% Glycerol, 0.5% BSA and 0.02% Sodium Azide.
Isotype	IgG
Molecular Weight	Calculated: 126kD
Storage Instruction	Store at -20°C for up to 1 year from the date of receipt, and avoid repeat freeze-thaw cycles.

### TARGET INFORMATION

Gene ID	<a href="#">7010</a>
Gene Symbol	<a href="#">TEK</a>
UniProt ID	<a href="#">TIE2_HUMAN</a>
Immunogen Region	1068-1117 aa
Specificity	Phospho-Tie-2 (Y1102) Polyclonal Antibody detects endogenous levels of Tie-2 protein only when phosphorylated at Y1102.

### ADDITIONAL INFORMATION

Note **STRICTLY FOR FURTHER SCIENTIFIC RESEARCH USE ONLY (RUO). MUST NOT TO BE USED IN DIAGNOSTIC OR THERAPEUTIC APPLICATIONS.**



Immunohistochemistry analysis of paraffin-embedded human brain, using TIE2 (Phospho-Tyr1102) Antibody. The picture on the right is blocked with the phospho peptide.