

Anti-Phospho-PAK Alpha/Beta/Gamma-Thr423/402/421 antibody (391-440 aa) (STJ91121)

GENERAL INFORMATION

Product Type	Primary antibodies
Applications	WB/IHC/IF/ELISA
Host / Source	Rabbit
Reactivity	Human/Mouse/Rat

PRODUCT PROPERTIES

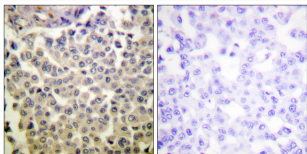
Clonality	Polyclonal
Concentration	1 mg/mL
Conjugation	Unconjugated
Purification	The antibody was affinity-purified from rabbit antiserum by affinity-chromatography using epitope-specific immunogen.
Dilution Range	WB 1:500-1:2000 IHC 1:100-1:300 ELISA 1:5000 IF 1:50-200
Formulation	Liquid in PBS containing 50% Glycerol, 0.5% BSA and 0.02% Sodium Azide.
Isotype	IgG
Molecular Weight	Observed: 60kD
Storage Instruction	Store at -20°C for up to 1 year from the date of receipt, and avoid repeat freeze-thaw cycles.

TARGET INFORMATION

Gene ID	5058 5063 5062 PAK1 PAK3 PAK1_HUMAN PAK3_HUMAN PAK2_HUMAN
Immunogen Region	391-440 aa
Specificity	Phospho-PAK Alpha/Beta/Gamma (T423/402/421) Polyclonal Antibody detects endogenous levels of PAK Alpha/Beta/Gamma protein only when phosphorylated at T423/402/421.

ADDITIONAL INFORMATION

Note STRICTLY FOR FURTHER SCIENTIFIC RESEARCH USE ONLY (RUO). MUST NOT TO BE USED IN DIAGNOSTIC OR THERAPEUTIC APPLICATIONS.



Immunohistochemistry analysis of paraffin-embedded human breast carcinoma, using PAK1/2/3 (Phospho-Thr423/402/421) Antibody. The picture on the right is blocked with the phospho peptide.