

## Anti-Phospho-MUC1-Tyr1229 antibody (1201-1250 aa) (STJ91106)

### GENERAL INFORMATION

Product Type	Primary antibodies
Applications	WB/IHC/IF/ELISA
Host / Source	Rabbit
Reactivity	Human/Rat/Mouse

### PRODUCT PROPERTIES

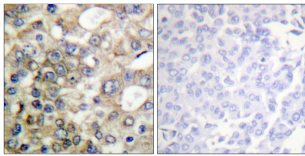
Clonality	Polyclonal
Concentration	1 mg/mL
Conjugation	Unconjugated
Purification	The antibody was affinity-purified from rabbit antiserum by affinity-chromatography using epitope-specific immunogen.
Dilution Range	WB 1:500-1:2000 IHC 1:100-1:300 IF 1:200-1:1000 ELISA 1:10000
Formulation	Liquid in PBS containing 50% Glycerol, 0.5% BSA and 0.02% Sodium Azide.
Isotype	IgG
Molecular Weight	Observed: 170kD
Storage Instruction	Store at -20°C for up to 1 year from the date of receipt, and avoid repeat freeze-thaw cycles.

### TARGET INFORMATION

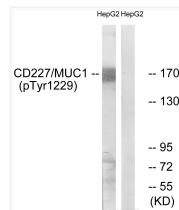
Gene ID	<a href="#">4582</a>
Gene Symbol	<a href="#">MUC1</a>
UniProt ID	<a href="#">MUC1_HUMAN</a>
Immunogen Region	1201-1250 aa
Specificity	Phospho-Mucin 1 (Y1229) Polyclonal Antibody detects endogenous levels of Mucin 1 protein only when phosphorylated at Y1229.

### ADDITIONAL INFORMATION

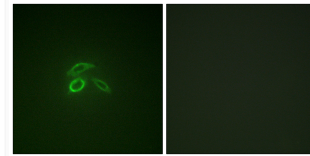
Note **STRICTLY FOR FURTHER SCIENTIFIC RESEARCH USE ONLY (RUO). MUST NOT TO BE USED IN DIAGNOSTIC OR THERAPEUTIC APPLICATIONS.**



Immunohistochemistry analysis of paraffin-embedded human breast carcinoma, using CD227/MUC1 (Phospho-Tyr1229) Antibody. The picture on the right is blocked with the phospho peptide.



Western blot analysis of lysates from HepG2 cells treated with PMA 125ng/ml 30', using CD227/MUC1 (Phospho-Tyr1229) Antibody. The lane on the right is blocked with the phospho peptide.



Immunofluorescence analysis of HepG2 cells, using CD227/MUC1 (Phospho-Tyr1229) Antibody. The picture on the right is blocked with the phospho peptide.