

Anti-Phospho-CDKN1C-Thr310 antibody (267-316 aa) (STJ91087)

GENERAL INFORMATION

| | |
|---------------|--------------------|
| Product Type | Primary antibodies |
| Applications | WB/IHC/IF/ELISA |
| Host / Source | Rabbit |
| Reactivity | Human/Mouse |

PRODUCT PROPERTIES

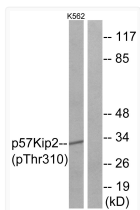
| | |
|---------------------|---|
| Clonality | Polyclonal |
| Concentration | 1 mg/mL |
| Conjugation | Unconjugated |
| Purification | The antibody was affinity-purified from rabbit antiserum by affinity-chromatography using epitope-specific immunogen. |
| Dilution Range | WB 1:500-1:2000 IHC 1:100-1:300 IF 1:200-1:1000 ELISA 1:10000 |
| Formulation | Liquid in PBS containing 50% Glycerol, 0.5% BSA and 0.02% Sodium Azide. |
| Isotype | IgG |
| Molecular Weight | Observed: 32kD |
| Storage Instruction | Store at -20°C for up to 1 year from the date of receipt, and avoid repeat freeze-thaw cycles. |

TARGET INFORMATION

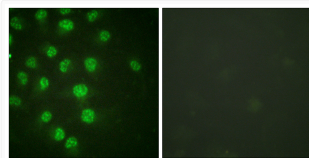
| | |
|------------------|---|
| Gene ID | 1028 |
| Gene Symbol | CDKN1C |
| UniProt ID | CDN1C_HUMAN |
| Immunogen Region | 267-316 aa |
| Specificity | Phospho-p57 (T310) Polyclonal Antibody detects endogenous levels of p57 protein only when phosphorylated at T310. |

ADDITIONAL INFORMATION

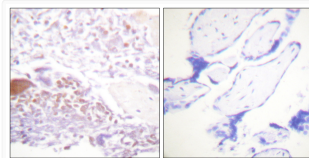
Note **STRICTLY FOR FURTHER SCIENTIFIC RESEARCH USE ONLY (RUO). MUST NOT TO BE USED IN DIAGNOSTIC OR THERAPEUTIC APPLICATIONS.**



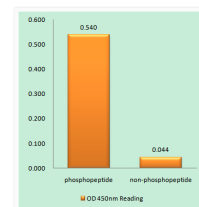
Western blot analysis of lysates from K562 cells treated with insulin 0.01U/ml 15', using p57 Kip2 (Phospho-Thr310) Antibody. The lane on the right is blocked with the phospho peptide.



Immunofluorescence analysis of HUVEC cells treated with serum 20% 30', using p57 Kip2 (Phospho-Thr310) Antibody. The picture on the right is blocked with the phospho peptide.



Immunohistochemistry analysis of paraffin-embedded human placenta, using p57 Kip2 (Phospho-Thr310) Antibody. The picture on the right is blocked with the phospho peptide.



Enzyme-Linked Immunosorbent Assay (Phospho-ELISA) for Immunogen Phosphopeptide (Phospho-left) and Non-Phosphopeptide (Phospho-right), using p57 Kip2 (Phospho-Thr310) Antibody