

Anti-Phospho-GAB1-Tyr659 antibody (644-674 aa) (STJ91067)

GENERAL INFORMATION

Product Type	Primary antibodies
Applications	WB/IHC/IF/ELISA
Host / Source	Rabbit
Reactivity	Human/Mouse/Rat

PRODUCT PROPERTIES

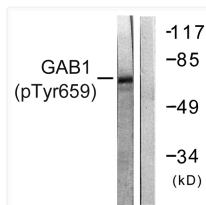
Clonality	Polyclonal
Concentration	1 mg/mL
Conjugation	Unconjugated
Purification	The antibody was affinity-purified from rabbit antiserum by affinity-chromatography using epitope-specific immunogen.
Dilution Range	WB 1:500-1:2000 IHC 1:100-1:300 IF 1:200-1:1000 ELISA 1:5000
Formulation	Liquid in PBS containing 50% Glycerol, 0.5% BSA and 0.02% Sodium Azide.
Isotype	IgG
Molecular Weight	Observed: 76kD
Storage Instruction	Store at -20°C for up to 1 year from the date of receipt, and avoid repeat freeze-thaw cycles.

TARGET INFORMATION

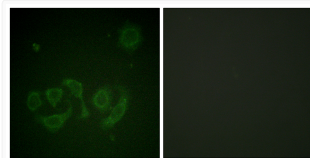
Gene ID	2549
Gene Symbol	GAB1
UniProt ID	GAB1_HUMAN
Immunogen Region	644-674 aa
Specificity	Phospho-Gab 1 (Y659) Polyclonal Antibody detects endogenous levels of Gab 1 protein only when phosphorylated at Y659.

ADDITIONAL INFORMATION

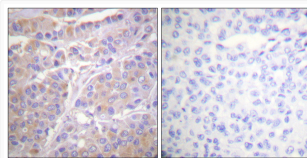
Note **STRICTLY FOR FURTHER SCIENTIFIC RESEARCH USE ONLY (RUO). MUST NOT TO BE USED IN DIAGNOSTIC OR THERAPEUTIC APPLICATIONS.**



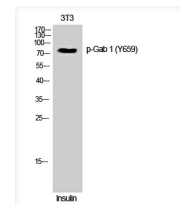
Western blot analysis of GAB1 (Phospho-Tyr659) Antibody. The lane on the right is blocked with the GAB1 (Phospho-Tyr659) peptide.



Immunofluorescence analysis of HepG2 cell, using GAB1 (Phospho-Tyr659) Antibody. The lane on the right is blocked with the GAB1 (Phospho-Tyr659) peptide.



Immunohistochemistry analysis of paraffin-embedded human breast cancer, using GAB1 (Phospho-Tyr659) Antibody. The picture on the right is blocked with the GAB1 (Phospho-Tyr659) peptide.



Western blot analysis of 3T3 cells using Phospho-Gab 1 (Y659) Polyclonal Antibody